

PRODUCT CATALOG

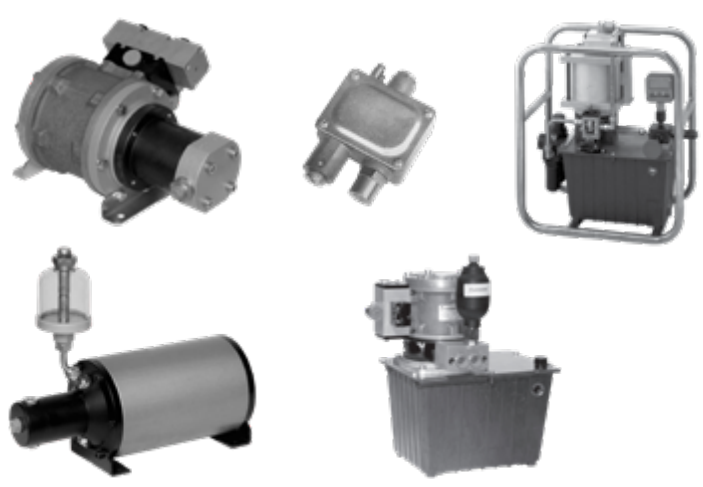
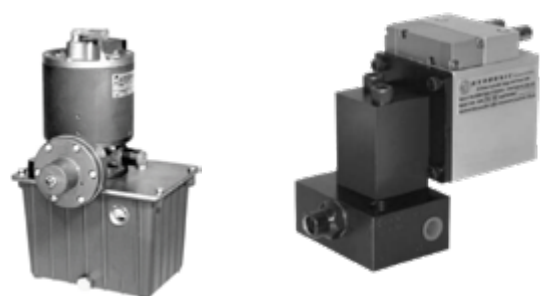
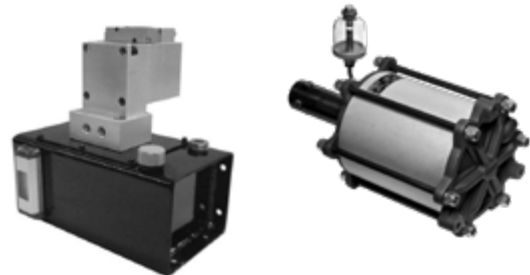


HYDRONIC
Air-Driven Hydraulic Pumps & Power Packs




MONNIER
COMPANIES

TABLE OF CONTENTS



INTRODUCTION

PUMPS

P720 SERIES

P801 SERIES

P820 SERIES

P825 SERIES

P826 SERIES

P830 SERIES

P901 SERIES

BOOSTERS

B822 SERIES

M840 SERIES

M845 SERIES

M850 SERIES

ACCESSORIES

A880 Pressure Switch

P820 Smoothing Kit

Air Preparation Equipment

Manifold Blocks

Gauges

Reservoirs

3

4

5

10

15

19

22

26

30

34

35

39

42

45

48

49

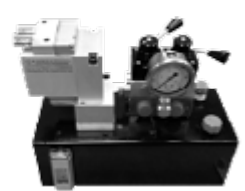
51

52

53

57

58



INTRODUCTION

Company Overview

Established in 1953, Hydronic is a leading-edge manufacturer of hydraulic pumps for a multitude of industries. We specialize in air driven hydraulic pumps, high pressure systems, and power units. Our product line includes miniature products for manifold mounting, complete off-the-shelf modular power packs, and a variety of models in between. Hydronic provides a wide offering of pump systems with flows up to 6 GPM and hydraulic pressures up to 52,000 PSI. Hydronic is a respected industry leader for standard and custom products that provide cost effective solutions for a variety of needs.

Hydronic Offers:

- Seven pump and four booster product families varying in flow and pressure
- Wide range of accessories
- The resources to engineer and manufacture custom hydraulic power units for a wide range of industries
- A simpler, modular design allows these pumps to have fewer parts making them easier to service
- Horizontal and vertical mounting versatility allows them to be easily integrated into a variety of systems

Why Air Powered?

- Lower energy consumption
- No heat build up from wasted energy when holding pressure
- Intrinsically safe drive section
- Sealed pump elements for brake fluid, Skydrol, even water
- Smaller envelope size and less oil needed

Sample Applications:



Material Handling



Pressure Sustaining



Clamping



Intermittent Operations



Filter Presses



Tire Presses



Water Hydraulics



Hazardous Areas



Multi-Fluids & Skydrol



High Pressure Testing



Portable Equipment

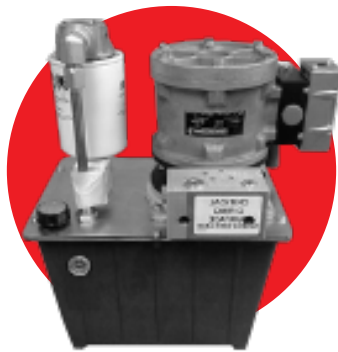
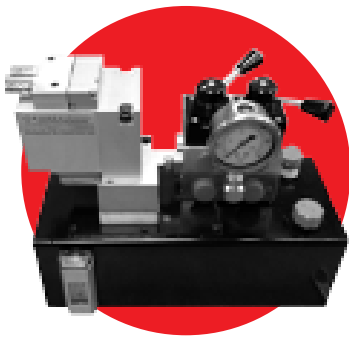


Workholding

PUMPS

TABLE OF CONTENTS

P720	Hydraulic Pressures 300 - 10,000 PSI	5
P801	Hydraulic Pressures 150 - 6,500 PSI	10
P820	Hydraulic Pressures 150 - 4,000 PSI	15
P825	Hydraulic Pressures 1,950 - 26,500 PSI	19
P826	Hydraulic Pressures 1,950 - 26,500 PSI	22
P830	Hydraulic Pressures 7,700 - 50,000 PSI	26
P901	Hydraulic Pressures 120 - 10,000 PSI	30



Features

- All Hydronic pumps provide intrinsically safe drive section
- All Hydronic pumps provide automatic leakage compensation
- All pumps are suitable for most fluids
- Infinitely variable flow
- Custom solutions are available

Applications:



Workholding



High Pressure
Testing

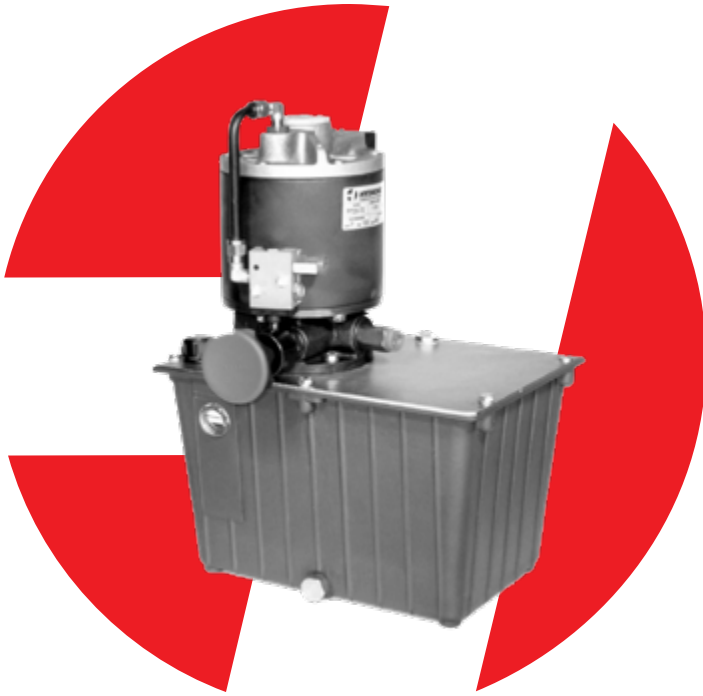


Clamping



Hazardous
Areas

P720 SERIES



P720M-10-N-R25

Applications:



Material Handling



Pressure Sustaining



Hazardous Areas



Multi-Fluids & Skydrol



Intermittent Operations

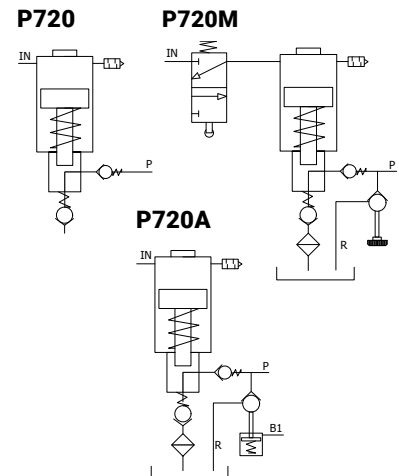


Clamping

Description

- Single acting pneumatic/single acting hydraulic
- Ideal for operating single acting hydraulic cylinders
- 10,000 PSI maximum hydraulic pressure
- Up to 2 GPM flow
- Can be controlled by means of a hand wheel on the pump (P720M version) or with pneumatic remote control (P720A version)
- Five intensification ratios available

Schematics



HYDRONIC WARRANTY POLICY: Hydronic, Corp. warrants each product against defects in material and workmanship for a period of 6 months from the date of manufacturing providing its use was in accordance with Hydronic recommendations. If the product fails to perform as warranted, Hydronic will, at its option, repair or replace the product free of charge. The company will not be liable for incidental or consequential damages. We make no other warranty, expressed or implied, including warranties of merchant ability or fitness for a particular purpose.

P720 SERIES



Features:

- Five ratios available with reservoirs and sub-plates
- Pumps come without a release valve (P720P), with a manual pressure release valve (P720M), or with an air pilot pressure release valve (P720A)
- All models either wall mounted or tank mounted versions
- Reservoirs available in four sizes of 1/3, 3/4, 1 1/2 and 2 1/2 gallon capacities
- Complete power units for single acting systems - no directional valves needed
- Seals available for brake fluid and other synthetic oils
- Release valves are ideal for manual use and with air pilot for remote or automated operations

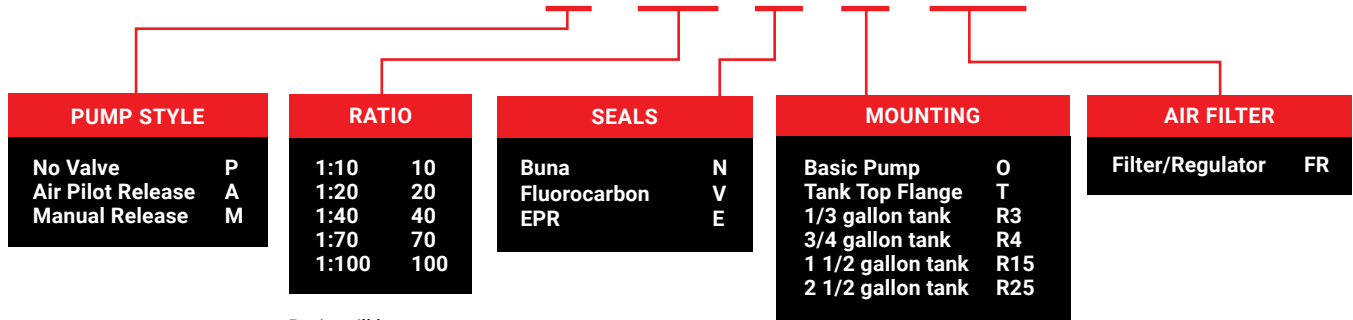
P720 Series P720-10 P720-20 P720-40 P720-70 P720-100

Air Pressure PSI (Bar)	20/100 PSI (1 1/2 - 7)				
Nominal Pressure Ratio	1:10	1:20	1:40	1:70	1:100
Max Oil Pressure PSI (Bar)	1,000 PSI (69)	2,000 PSI (138)	4,000 PSI (275)	7,000 PSI (483)	10,000 PSI (690)
Flow GPM	2 GPM	1.1 GPM	.68 GPM	.45 GPM	.32 GPM
Weight: Pump Only Lbs (Kg)	17 LBS (7.7)				
Weight: w/ Reservoir Lbs (Kg)	R3: 22.5 LBS (10) R4: 23 LBS (10.5) R3: 27 LBS (12.3) R4: 29 LBS (13.2)				

NOTE: Always fit an air filter/regulator with 20 micron rating and 30 scfm capacity. Slightly lower ratios can be expected at lower input air pressures.

Ordering Information:

P720P-10-N-O-FR



Ratio will be less when the air pressure is lower than 100 psi.

Example Order: P720P-10-N-O-FR = P720 pump with no valve, a 1:10 ratio, Buna seals, a basic pump, and an air filter/regulator.

P720 SERIES

Dimensional Data:

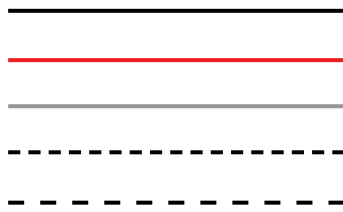
Pump Dimensions with 3/4, 1 1/2, and 2 1/2 Gallon Tanks	Reservoir Capacity	3/4 G (Type R4)	1 1/2 G (Type R15)	2 1/2 G (Type R25)
	A	8.63	11	13.38
	B	6.31	7.88	9.75
	C	6.18	7.21	8.88
	D	6.50	8.25	9.84
	E	6.50	6.50	6.50
	F	5.50	5.50	5.50
	G (x 4)	M6	M6	M8

P720 SERIES

Performance Guides:

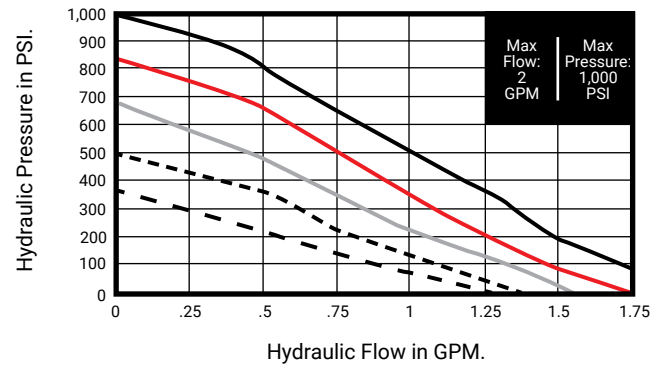
AIR PRESSURE:

100 PSI
90 PSI
75 PSI
60 PSI
45 PSI



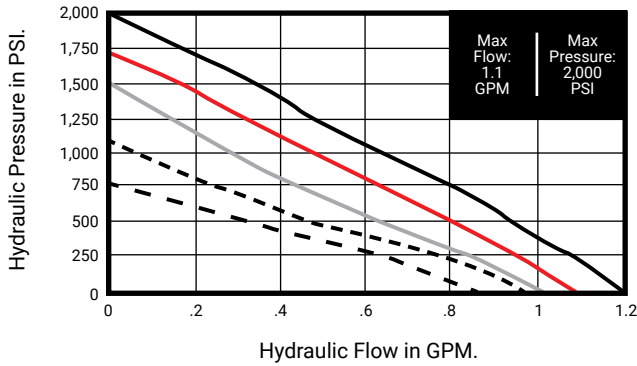
P720-10

Fluid Flow Against Pressure



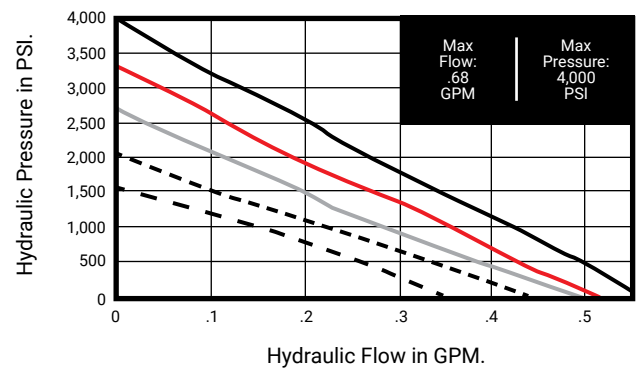
P720-20

Fluid Flow Against Pressure



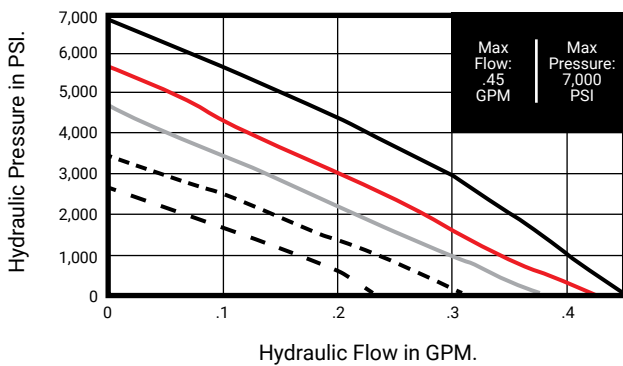
P720-40

Fluid Flow Against Pressure



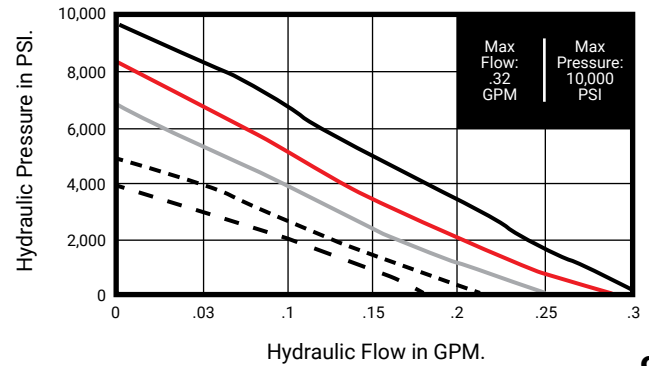
P720-70

Fluid Flow Against Pressure

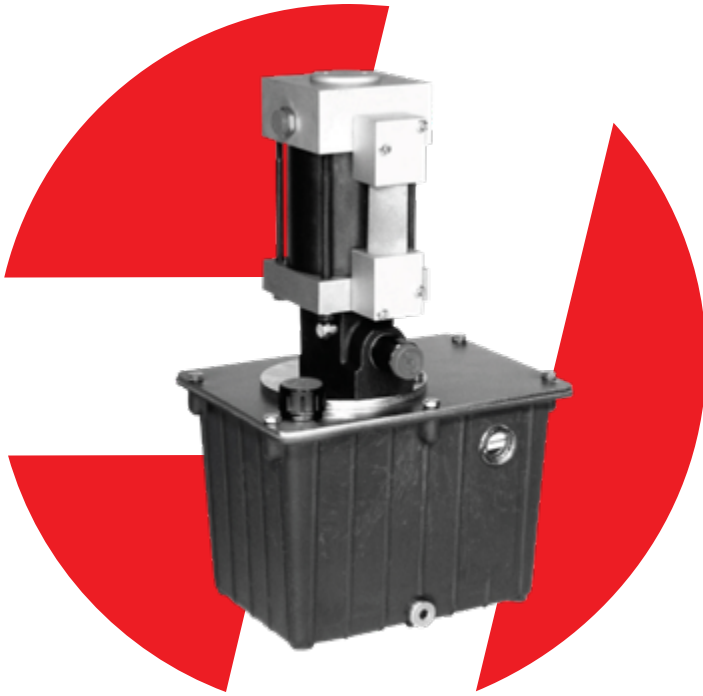


P720-100

Fluid Flow Against Pressure



P801 SERIES



P801-42-N-R4

Description

- Single acting pneumatic/single acting hydraulic pump
- Compact
- 6,500 PSI maximum hydraulic pressure
- Up to 2.5 GPM flow
- Available in stainless steel
- Six intensification ratios available

Applications:



Material Handling



Pressure Sustaining



Hazardous Areas



Multi-Fluids & Skydrol



Intermittent Operations



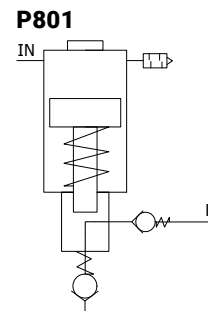
Water Hydraulics*



Clamping

*Including deionized or demineralized water.

Schematics



HYDRONIC WARRANTY POLICY: Hydronic, Corp. warrants each product against defects in material and workmanship for a period of 6 months from the date of manufacturing providing its use was in accordance with Hydronic recommendations. If the product fails to perform as warranted, Hydronic will, at its option, repair or replace the product free of charge. The company will not be liable for incidental or consequential damages. We make no other warranty, expressed or implied, including warranties of merchant ability or fitness for a particular purpose.

P801 SERIES

P801
with
2 1/2
Gallon
Tank



P801

Features:

- Six ratios available with reservoirs and sub-plates
- High performance, single acting pump
- Compact and rugged
- Available with or without a reservoir
- Reservoirs available in four sizes of 1/3, 3/4, 1 1/2, 2 1/2
- Can be used with water (INOX version)
- Can be wall mounted, vertically or horizontally, or tank top mounted
- Available in stainless steel
- Can be supplied as a complete system including valves, air preparation, etc.

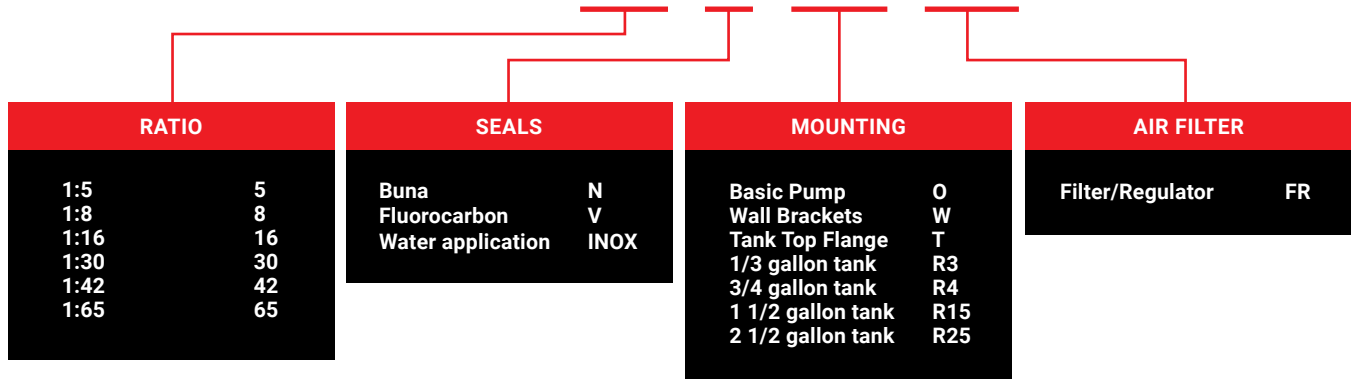
P801 Series P801-5 P801-8 P801-16 P801-30 P801-42 P801-65

Air Pressure PSI (Bar)	20/100 PSI (1 1/2 - 7)					
Nominal Pressure Ratio	1:5	1:8	1:16	1:30	1:42	1:65
Max Oil Pressure PSI (Bar)	500 PSI (35)	800 PSI (55)	1,600 PSI (110)	3,000 PSI (206)	4,200 PSI (290)	6,500 PSI (448)
Flow GPM	2.5 GPM	1.7 GPM	.92 GPM	.52 GPM	.4 GPM	.25 GPM
Weight: Pump Only Lbs (Kg)	8 LBS (3.6)					
Weight: w/ Reservoir Lbs (Kg)	R3: 13 LBS (6) R4: 16 LBS (7) R3: 22.5 LBS (10.5) R4: 25 LBS (11.5)					

NOTE: Always fit an air filter/regulator with 20 micron rating and 30 scfm capacity. Slightly lower ratios can be expected at lower input air pressures.

Ordering Information:

P801-16-N-R4-FR

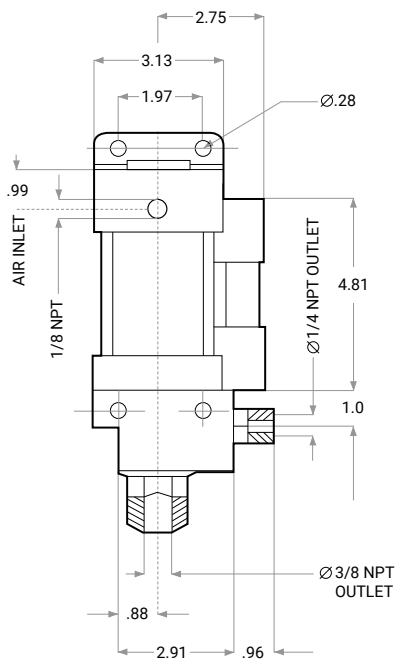
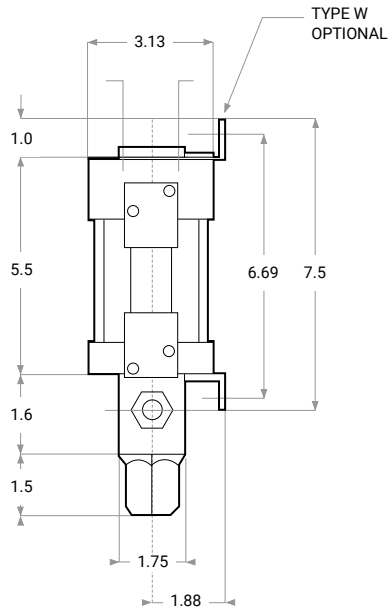


Example Order: P801-16-N-R4-FR = P801 pump with a 1:16 ratio, Buna seals, a 3/4 gallon tank, and an air filter/regulator.

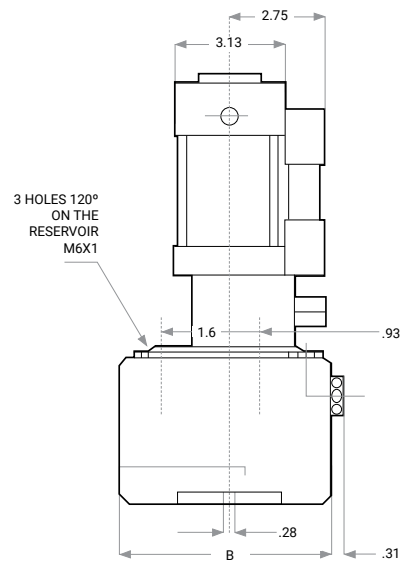
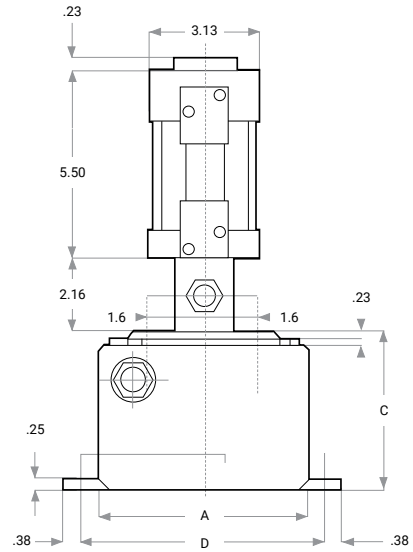
P801 SERIES

Dimensional Data:

Pump Dimension with
Wall Bracket (Type O)

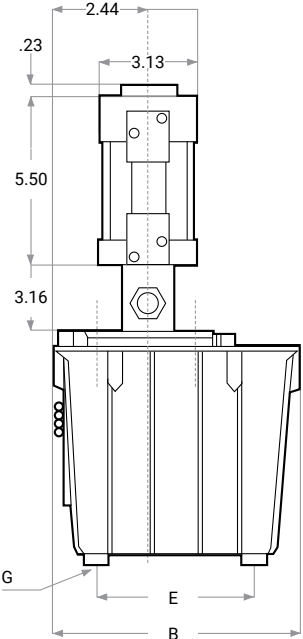
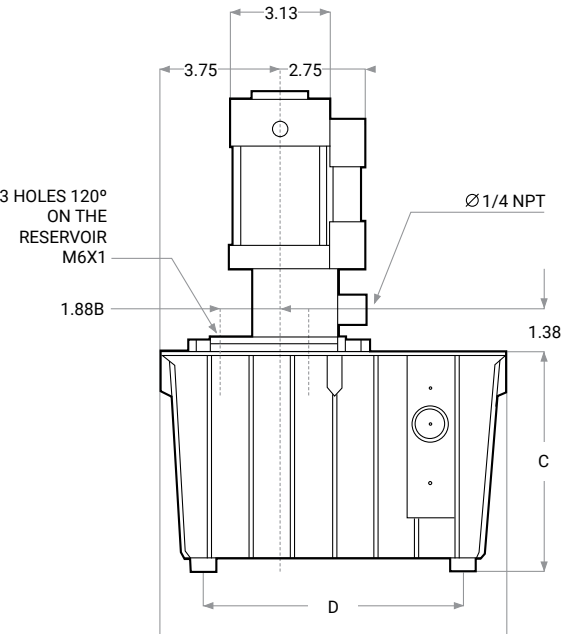


Pump Dimensions with
1/3 Gallon Tank (Type R3)



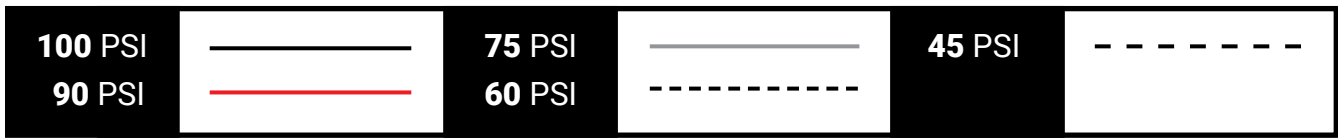
P801 SERIES

Dimensional Data:

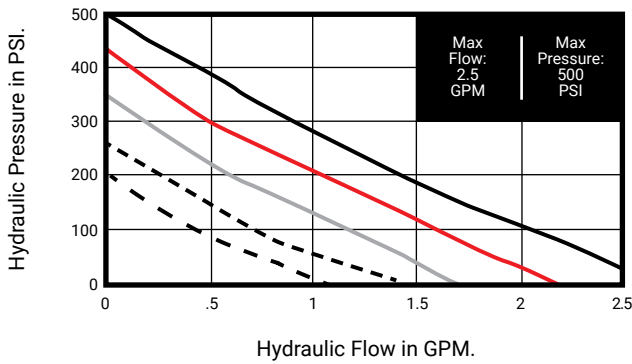
Pump Dimensions with 3/4, 1 1/2, and 2 1/2 Gallon Tanks	Reservoir Capacity	1/3 G (Type R3)	3/4 G (Type R4)	1 1/2 G (Type R15)	2 1/2 G (Type R25)
	A	5.90	8.66	11	13.38
	B	5.90	6.31	6.31	9.75
	C	4.21	6.18	7.25	8.88
	D	7.06	6.50	8.25	9.84
	E	-	6.50	5.13	6.69
	G (x 4)	-	M6	M6	M8

P801 SERIES

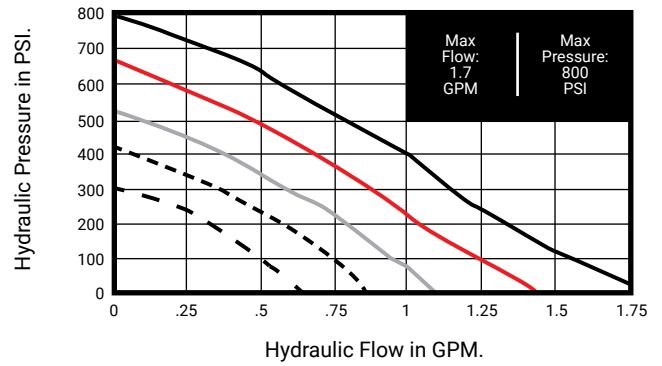
Performance Guides:



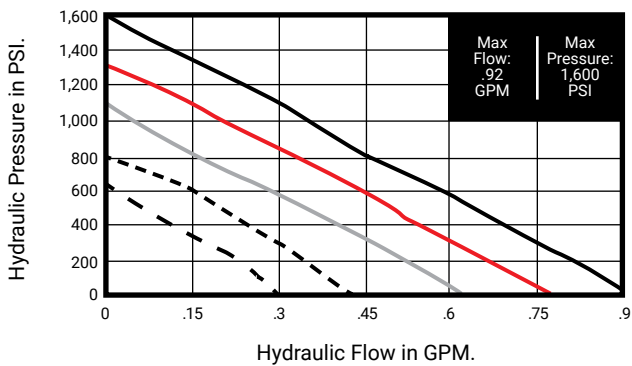
P801-5 Fluid Flow Against Pressure



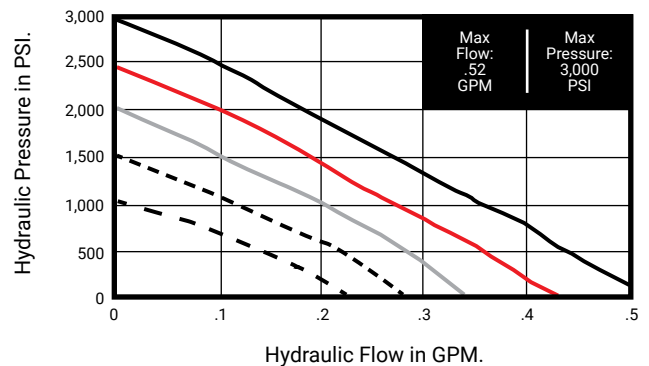
P801-8 Fluid Flow Against Pressure



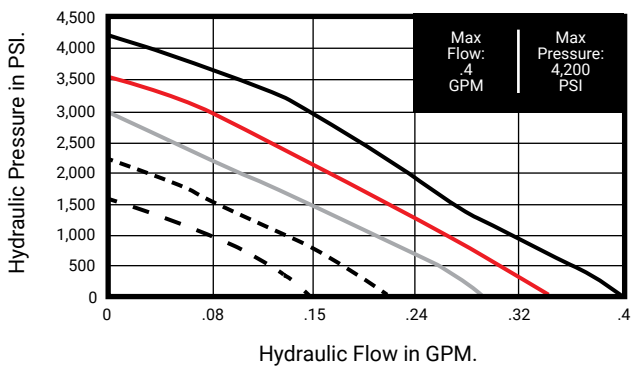
P801-16 Fluid Flow Against Pressure



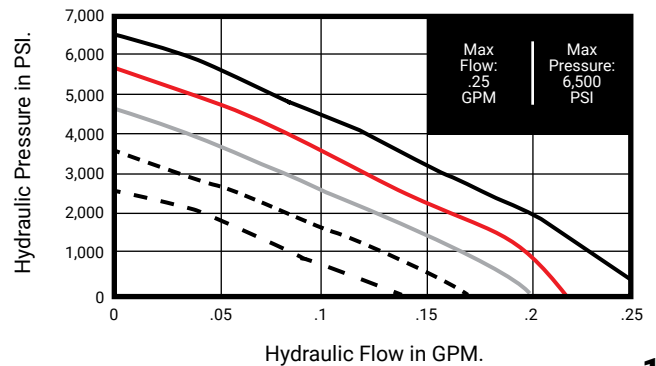
P801-30 Fluid Flow Against Pressure



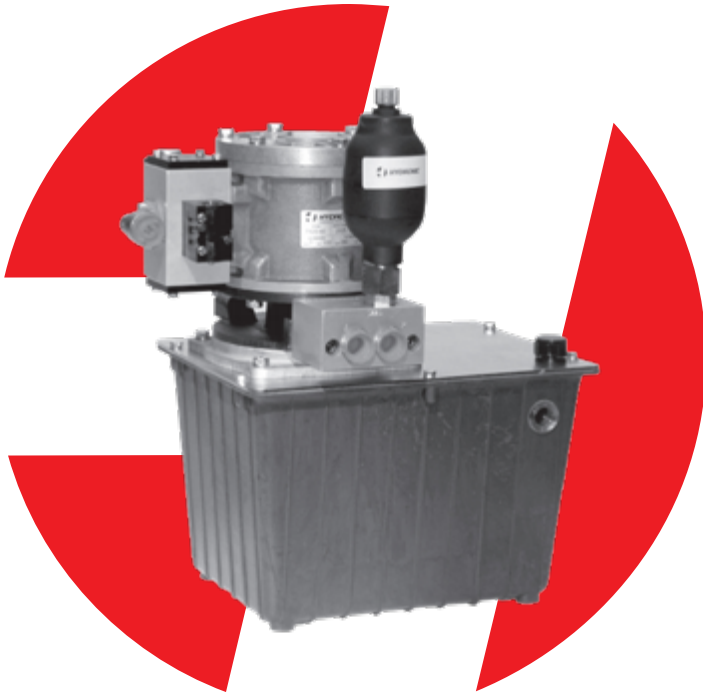
P801-42 Fluid Flow Against Pressure



P801-65 Fluid Flow Against Pressure



P820 SERIES



P820-10-N-R25-M with Smoothing Kit

Description

- Double acting pneumatic/double acting hydraulic
- ATEX Certified (II 2GD cIIB TX)
- 4,000 PSI maximum hydraulic pressure
- Up to 6 GPM flow
- Smoothing kits available
- Air pilot release
- Five intensification ratios available

Applications:



Material Handling



Pressure Sustaining



Hazardous Areas



Multi-Fluids & Skydrol



Intermittent Operations



Portable Equipment



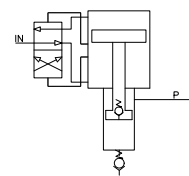
Clamping



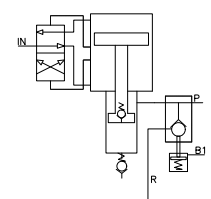
Workholding

Schematics

P820



P820A



HYDRONIC WARRANTY POLICY: Hydronic, Corp. warrants each product against defects in material and workmanship for a period of 6 months from the date of manufacturing providing its use was in accordance with Hydronic recommendations. If the product fails to perform as warranted, Hydronic will, at its option, repair or replace the product free of charge. The company will not be liable for incidental or consequential damages. We make no other warranty, expressed or implied, including warranties of merchant ability or fitness for a particular purpose.

P820 SERIES

P820
with
2 1/2
Gallon
Tank



P820
with
D03
Sub
Plate



P820 Series P820-5 P820-10 P820-20 P820-30 P820-40

Air Pressure PSI (Bar)	20 -100 PSI (1.4 to 7)				
Nominal Pressure Ratio	1:5	1:10	1:20	1:30	1:40
Max Oil Pressure PSI (Bar)	500 PSI (35)	1,000 PSI (69)	2,000 PSI (138)	3,000 PSI (206)	4,000 PSI (275)
Flow GPM	6 GPM	4 GPM	2 GPM	1.5 GPM	1 GPM
Weight: Pump Only Lbs (Kg)	44 LBS (20)		33 LBS (15)		

Features:

- Five ratios available with reservoirs and sub-plates
- High performance, double acting pneumatic drive section
- High flow rates at medium to low hydraulic pressure
- Can mount vertically or horizontally
- Reservoirs available in eight sizes of 1/2, 1, 2 1/2, 3, 5, 8, 10, and 20 gallon
- Air operation means intrinsically safe use in hazardous areas and applications
- SAE ported manifold with pressure and return connection
- Installation of directional control valves with D03 pattern sub plate
- Complete units with directional control valves, pressure switches, accumulators, pressure gauges, etc. are available

NOTE: Always fit an air filter/regulator with 20 micron rating and 30 scfm capacity.

Ordering Information:

P820A-20-N-R50-O-FR

PUMP STYLE	
No Valve	P
Air Pilot Release	A

RATIO	
1:5	5
1:10	10
1:20	20
1:30	30
1:40	40

SEALS	
Buna	N
Fluorocarbon	V
EPR	E
Water App	INOX

MOUNTING	
Basic Pump	O
Wall Brackets	W
Tank Top Mounting	T
Vertical Reservoir, .5 gal/1 gal	N/NL
Horizontal Reservoir, .5 gal/1gal	H/HL
2 1/2 gallon tank	R25
3 gallon tank	R30
5 gallon tank	R50
8 gallon tank	R80
10 gallon tank	R100
20 gallon tank	R200

AIR FILTER	
Filter/Regulator	FR

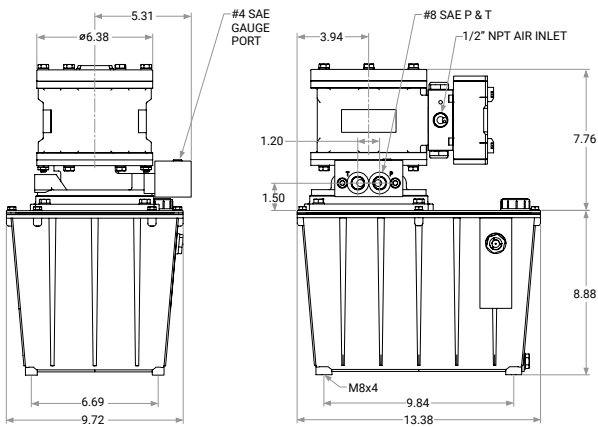
FLUID CONNECTIONS	
Basic Pump Only	O
Port Block, front entry, #8 SAE	P
PRV Port Block, front entry, #8 SAE	PA
Port Block, side entry, #8 SAE	SP
Smoothing Kit Block, #8 SAE	M
D03 single station, #6 SAE	DH
D03 two station, #6 SAE	DH2

Example Order: P820-20-N-R50-DH-FR = P820 pump with a 1:20 ratio, Buna seals, a 5 gallon tank, a basic single station D03 manifold, and an air filter/regulator.

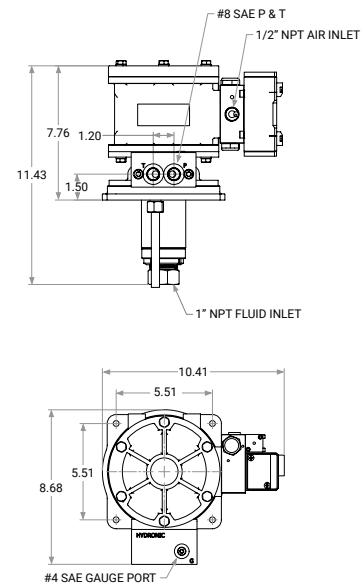
P820 SERIES

Dimensional Data:

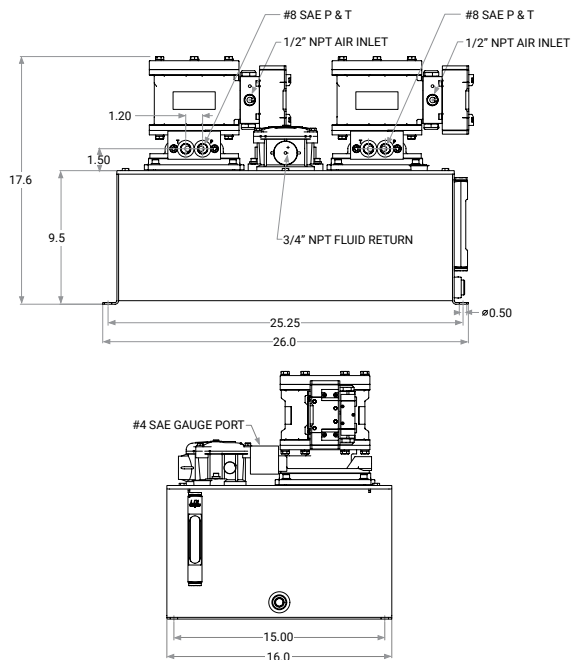
Pump Dimensions with
2 1/2 Gallon Tank (Type R25)



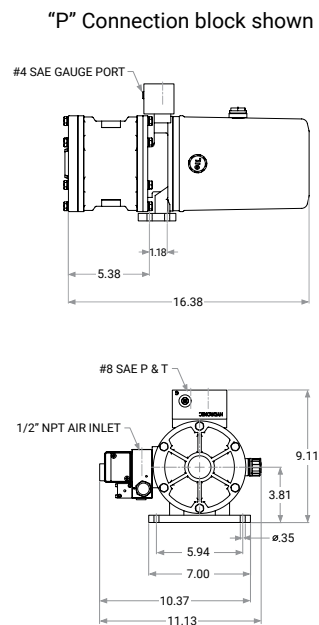
Pump Dimensions for
Tank Top Mounting (T Option)



Pump Dimensions with
10 Gallon Tank (Type R100)



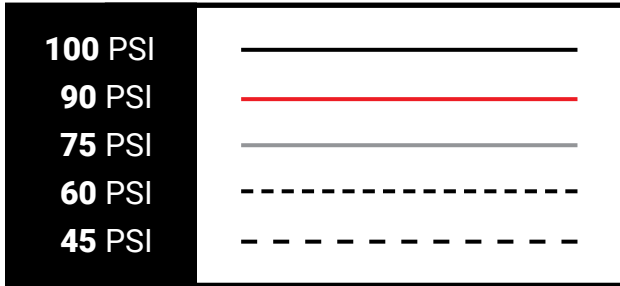
Pump Dimensions with
Standard Tank (Type H or N)



P820 SERIES

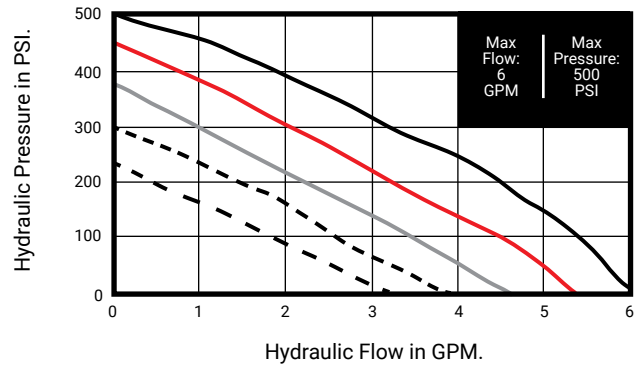
Performance Guides:

AIR PRESSURE:



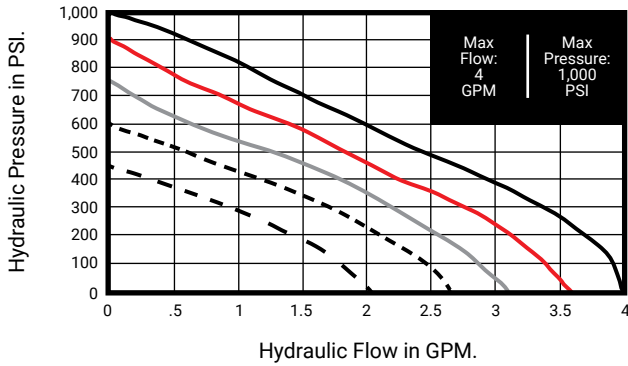
P820-5

Fluid Flow Against Pressure



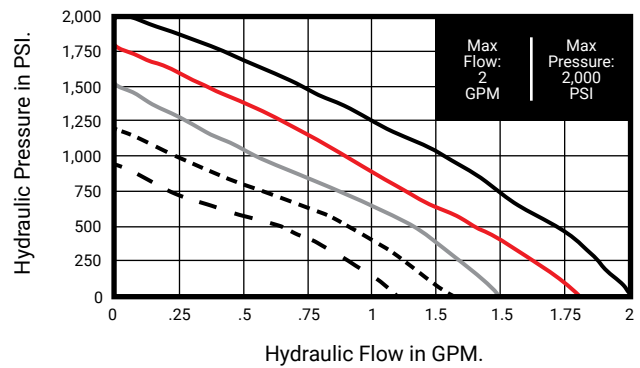
P820-10

Fluid Flow Against Pressure



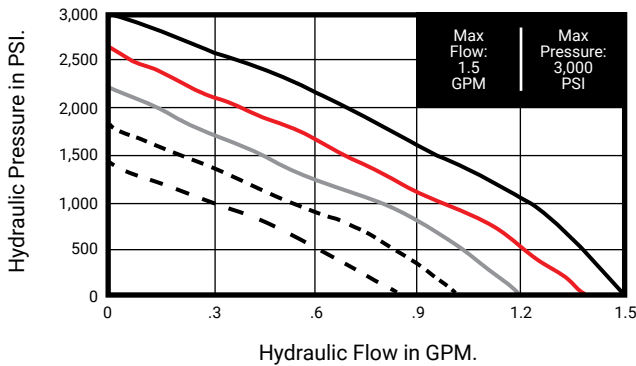
P820-20

Fluid Flow Against Pressure



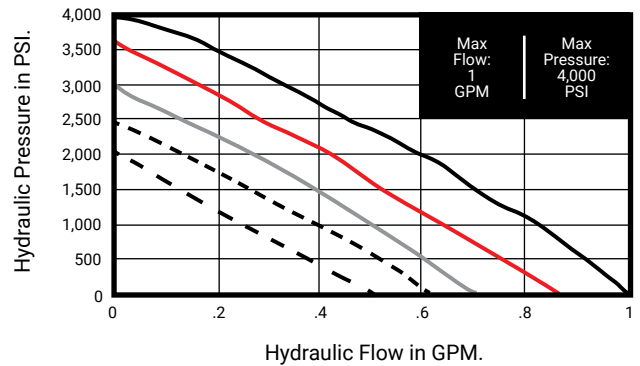
P820-30

Fluid Flow Against Pressure

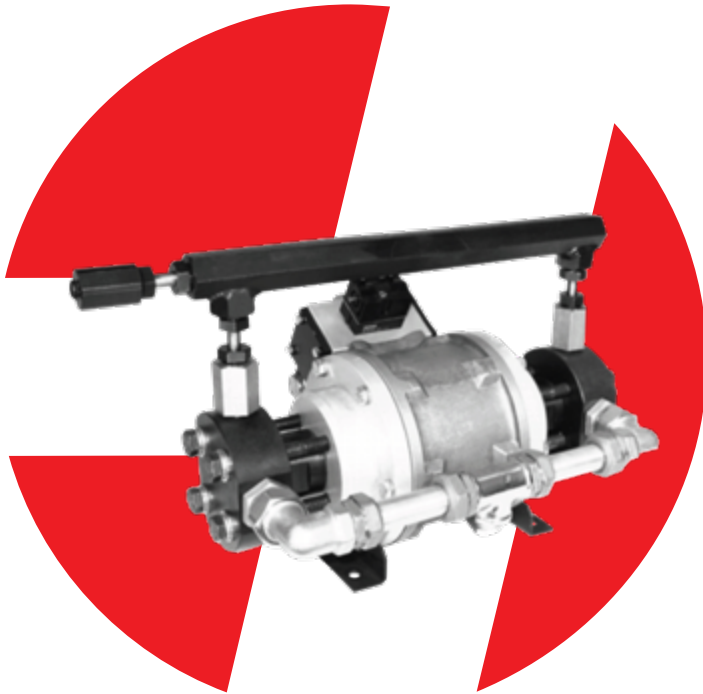


P820-40

Fluid Flow Against Pressure



P825 SERIES



P825-65-N-0

Description

- High performance, double acting pneumatic drive section
- 26,500 PSI maximum hydraulic pressure
- Up to 0.7 GPM flow
- Stainless steel models available
- Four intensification ratios available

Applications:



Material Handling



Pressure Sustaining



Clamping



High Pressure Testing



Multi-Fluids & Skydrol



Workholding



Intermittent Operations



Hazardous Areas

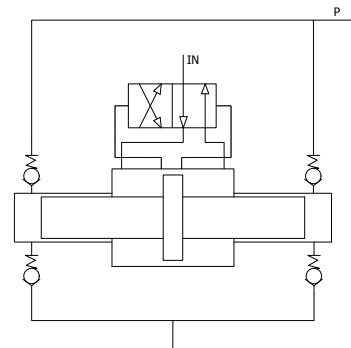


Water Hydraulics*

*Including deionized or demineralized water.

Schematics

P825



HYDRONIC WARRANTY POLICY: Hydronic, Corp. warrants each product against defects in material and workmanship for a period of 6 months from the date of manufacturing providing its use was in accordance with Hydronic recommendations. If the product fails to perform as warranted, Hydronic will, at its option, repair or replace the product free of charge. The company will not be liable for incidental or consequential damages. We make no other warranty, expressed or implied, including warranties of merchant ability or fitness for a particular purpose.

P825 SERIES

P825
with
Basic
Pump



P825 Series	P825-65	P825-120	P825-170	P825-265
Air Pressure PSI (Bar)	20/100 PSI (1 1/2 - 7)			
Nominal Pressure Ratio	1:65	1:120	1:170	1:265
Max Oil Pressure PSI (Bar)	6,500 PSI (450)	12,000 PSI (827)	17,000 PSI (1,172)	26,500 PSI (1,827)
Flow CI/Min	160 CI/MIN	100 CI/MIN	73 CI/MIN	57 CI/MIN
Weight: Pump Only Lbs (Kg)	40 LBS (18)			

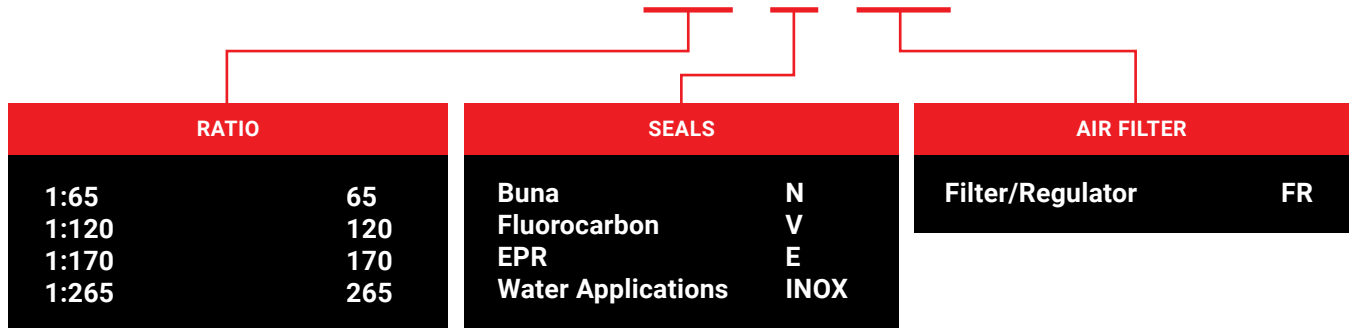
Features:

- Four ratios available, all of which can either be stand alone or tank mounted versions
- High performance, double acting pump with opposing pumping elements used in high pressure hydraulic circuits for pressurization, resistance, and deformation testing
- High efficiency air drive section
- Double acting pump elements provide consistent fluid pressures
- Hydraulic chambers are made of ultra-strong components, which makes this pump ideal for long-term pressure sustaining applications such as burst testing and nondestructive testing
- Delivers pressures up to 26,500 PSI
- Available in stainless steel and for use in water applications (INOX)

NOTE: Always fit an air filter/regulator with 20 micron rating and 30 scfm capacity.

Ordering Information:

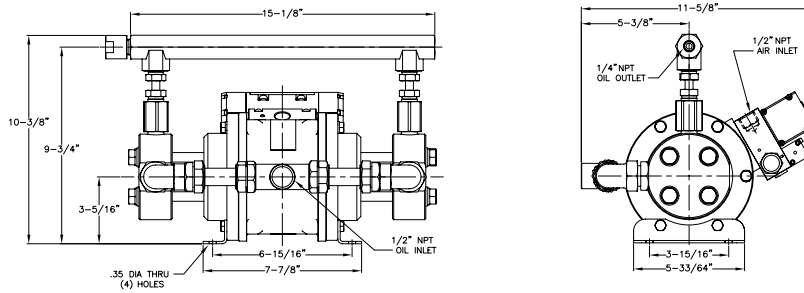
P825-65-N-FR



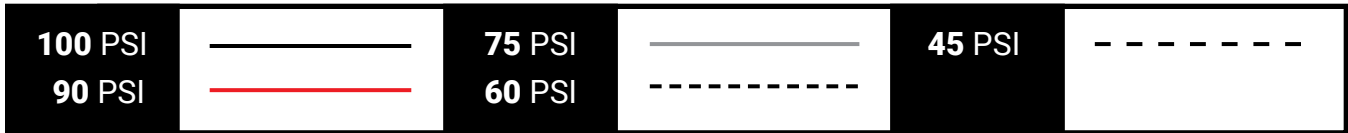
EXAMPLE ORDER: P825-65-N-FR = P825 pump with a 1:65 ratio, Buna seals, and an air filter/regulator.

P825 SERIES

Dimensional Data:

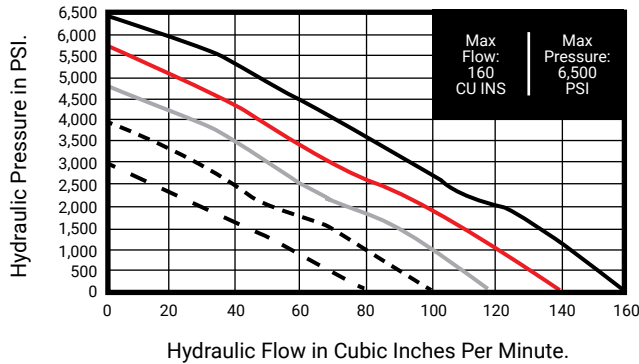


Performance Guides:



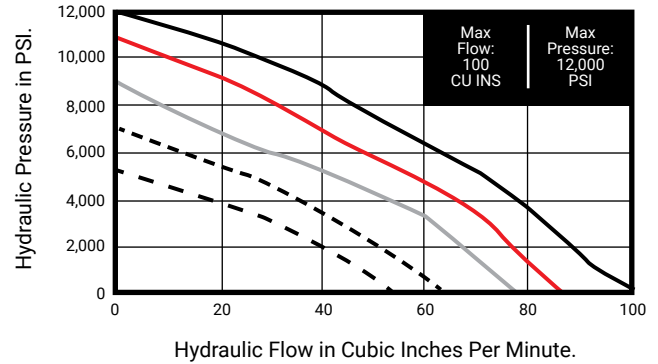
P825-65

Fluid Flow Against Pressure



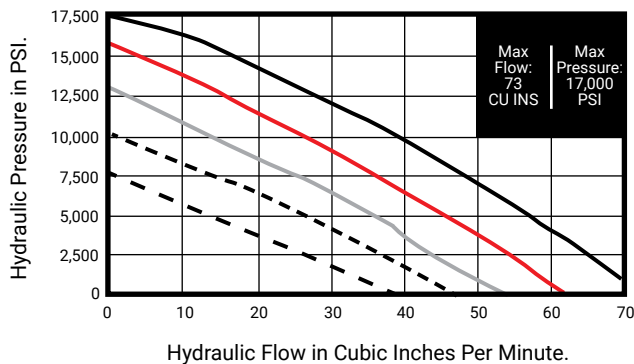
P825-120

Fluid Flow Against Pressure



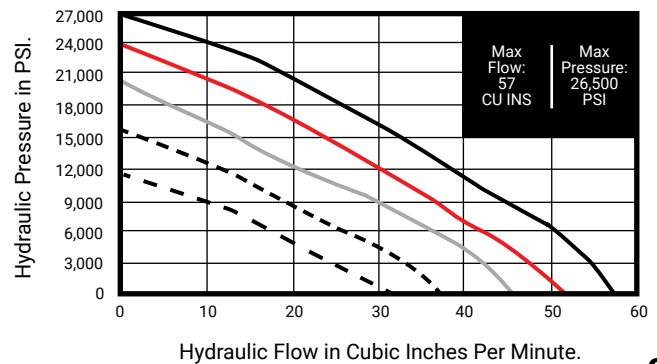
P825-170

Fluid Flow Against Pressure



P825-265

Fluid Flow Against Pressure



P826 SERIES



P826A-120-N-R25 with Protective Frame

Applications:



Material Handling



Pressure Sustaining



Filter Presses



Tire Presses



Multi-Fluids & Skydrol



Portable Equipment



Intermittent Operations



Hazardous Areas



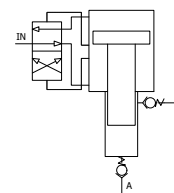
Clamping

Description

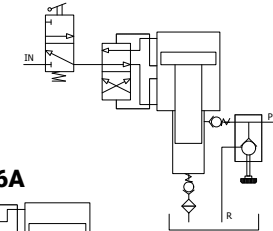
- Double acting pneumatic/single acting hydraulic
- Available with wall brackets for line mounting; flanges for tank mounting
- ATEX Certified (II 2GD cIIB TX)
- 26,500 PSI maximum hydraulic pressure
- Up to 0.5 GPM flow
- Five intensification ratios available

Schematics

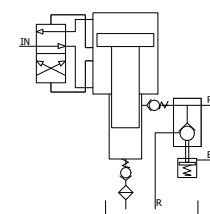
P826



P826M



P826A



HYDRONIC WARRANTY POLICY: Hydronic, Corp. warrants each product against defects in material and workmanship for a period of 6 months from the date of manufacturing providing its use was in accordance with Hydronic recommendations. If the product fails to perform as warranted, Hydronic will, at its option, repair or replace the product free of charge. The company will not be liable for incidental or consequential damages. We make no other warranty, expressed or implied, including warranties of merchant ability or fitness for a particular purpose.

P826 SERIES



P826M
with 2 1/2 Gallon Tank



P826A
with 2 1/2 Gallon Tank

P826 Series P826-65 P826-80 P826-120 P826-170 P826-265

Air Pressure PSI (Bar)	20/100 PSI (1 1/2 - 7)				
Nominal Pressure Ratio	1:65	1:80	1:120	1:170	1:265
Max Oil Pressure PSI (Bar)	6,500 PSI (450)	8,000 PSI (545)	12,000 PSI (827)	17,000 PSI (1,172)	26,500 PSI (1,827)
Flow CI/MIN	115 CI/MIN	112 CI/MIN	73 CI/MIN	53 CI/MIN	40 CI/MIN
Weight: Pump Only Lbs (Kg)	25 LBS (11.3)				

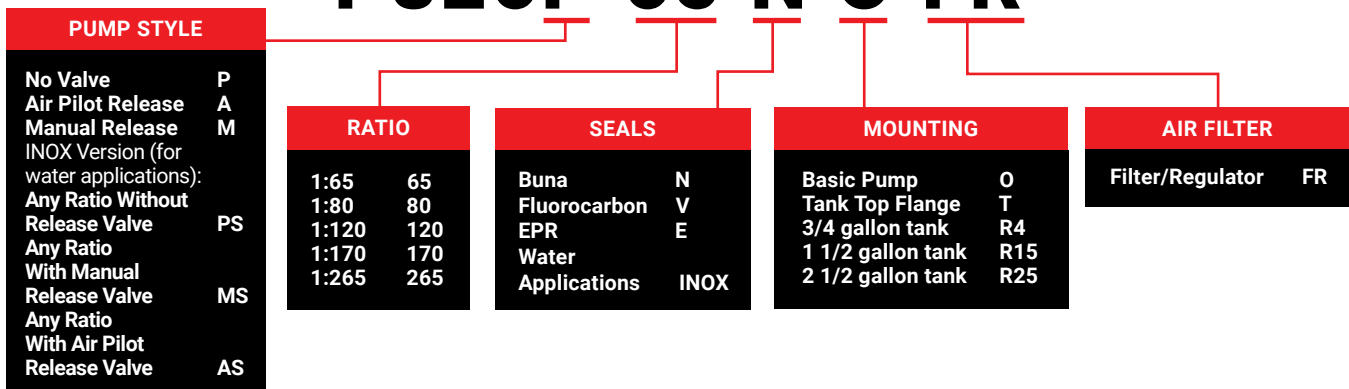
Features:

- Five ratios available with reservoirs
- High performance, double acting pneumatic drive section
- Excellent for high pressure fluid power or clamping circuits
- Wall brackets for line mounting, flanges for tank mounting
- Reservoirs available in three sizes of 3/4, 1 1/2, and 2 1/2 gallons, others available on request
- Pressure release valve option, manual and air operated
- No directional valves are needed for single acting actuators
- Models available for water applications
- Ultra-high-pressure ratings are excellent for material and hydrostatic testing

NOTE: Always fit an air filter/regulator with 20 micron rating and 30 scfm capacity.

Ordering Information:

P826P-65-N-O-FR

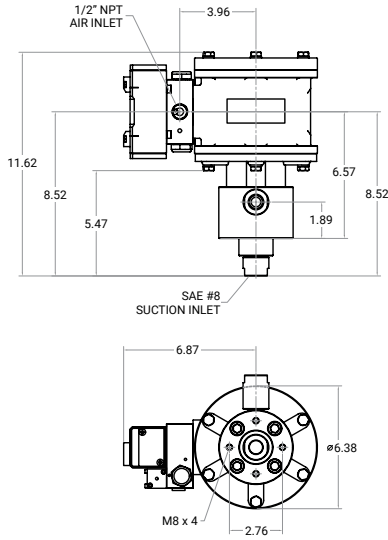


Example Order: P826P-65-N-O-FR = P826 pump without valve, a 1:65 ratio, Buna seals, a basic pump, and an air filter/regulator.

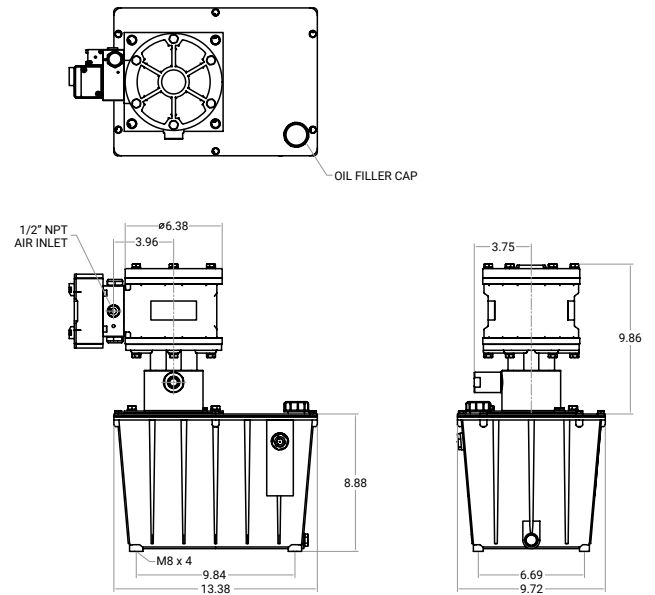
P826 SERIES

Dimensional Data:

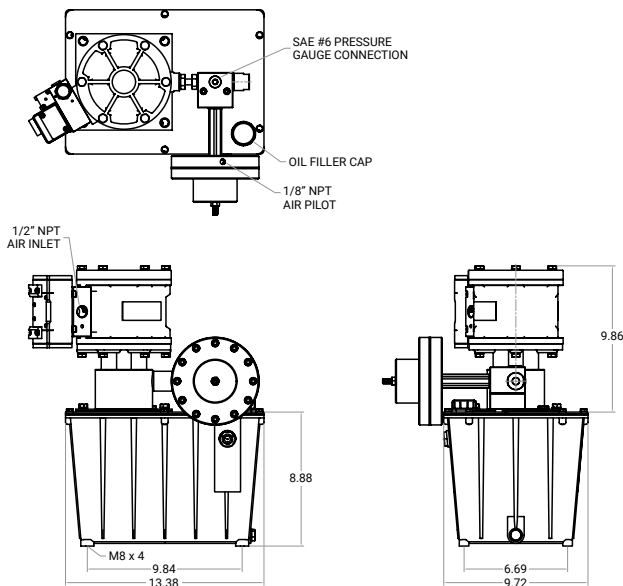
Pump Dimensions without Reservoir (Type O)



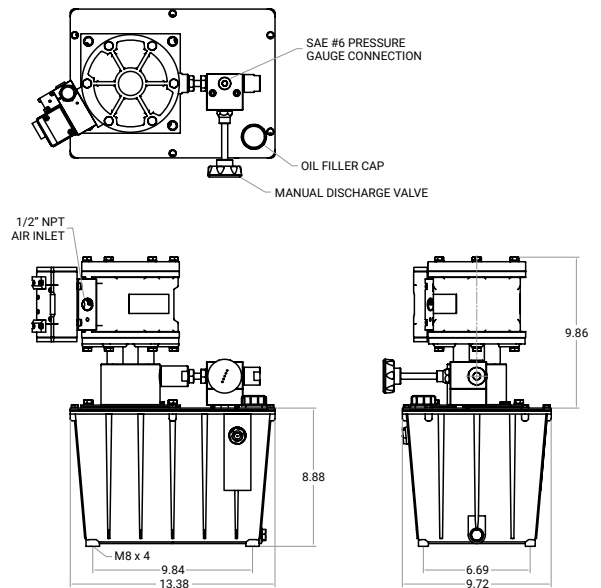
Pump Dimensions with 2 1/2 Gallon Tank (Type R25)



Pump Dimensions with Air Piloted Release Valve 2 1/2 Gallon Tank (Type R25)



Pump Dimensions with Manual Release Valve 2 1/2 Gallon Tank (Type R25)

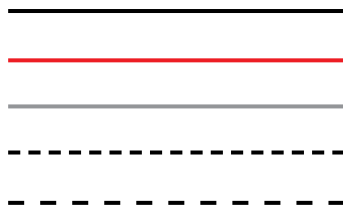


P826 SERIES

Performance Guides:

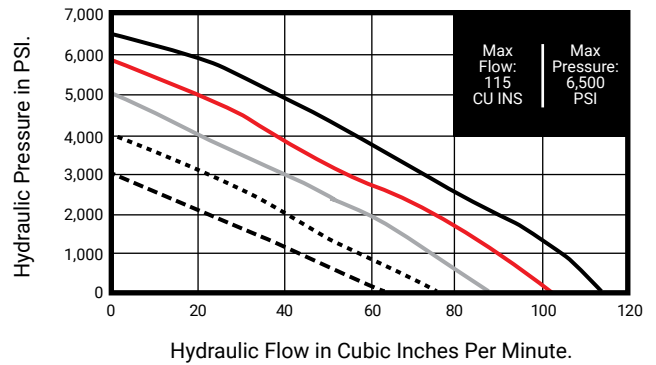
AIR PRESSURE:

100 PSI
90 PSI
75 PSI
60 PSI
45 PSI



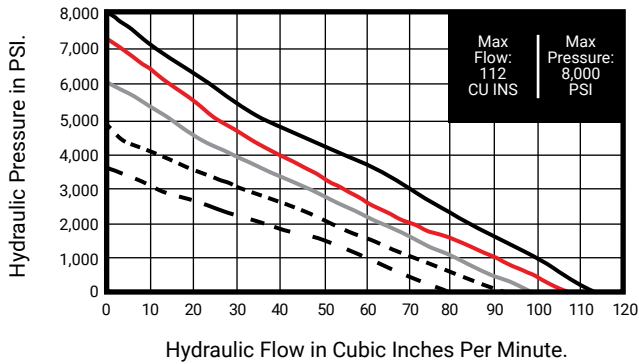
P826-65

Fluid Flow Against Pressure



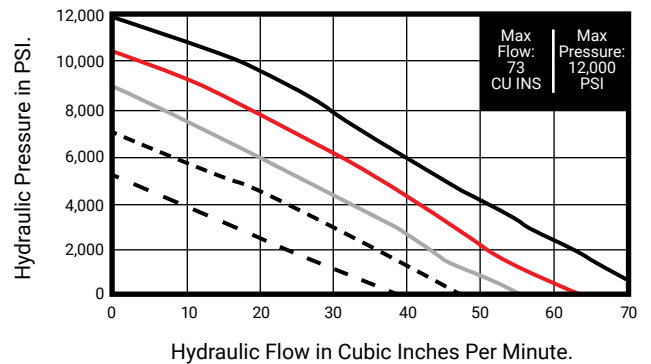
P826-80

Fluid Flow Against Pressure



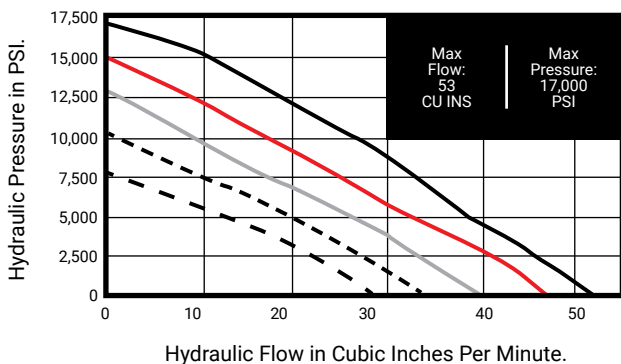
P826-120

Fluid Flow Against Pressure



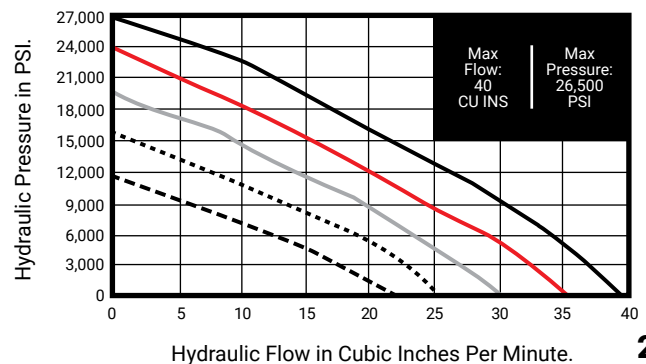
P826-170

Fluid Flow Against Pressure

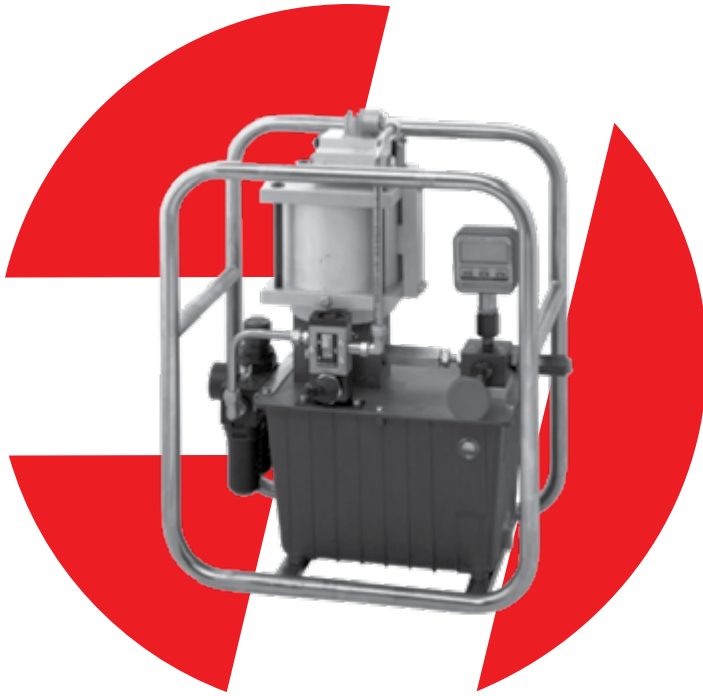


P826-265

Fluid Flow Against Pressure



P830 SERIES



P830M-528-N-R25 with Protective Frame

Description

- Double acting hydraulic/double acting pneumatic
- 50,000 PSI maximum hydraulic pressure
- Up to 0.2 GPM flow
- Four intensification ratios available

Applications:



Material Handling



Pressure Sustaining



Clamping



Portable Equipment



Hazardous Areas



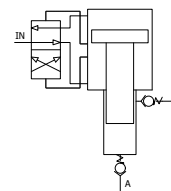
Intermittent Operations



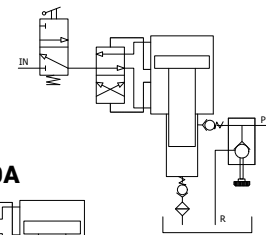
Multi-Fluids

Schematics

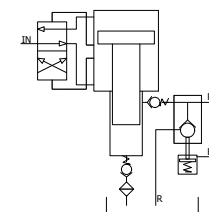
P830



P830M



P830A



HYDRONIC WARRANTY POLICY: Hydronic, Corp. warrants each product against defects in material and workmanship for a period of 6 months from the date of manufacturing providing its use was in accordance with Hydronic recommendations. If the product fails to perform as warranted, Hydronic will, at its option, repair or replace the product free of charge. The company will not be liable for incidental or consequential damages. We make no other warranty, expressed or implied, including warranties of merchant ability or fitness for a particular purpose.

P830 SERIES

P830M
2 1/2 gallon tank with manual release valve & custom frame



Features:

- Four ratios available with reservoirs
- High performance, double acting pneumatic drive section
- Ultra-high pressure at medium to low flows
- Air operation means intrinsically safe in hazardous areas
- Available with or without a reservoir
- Six reservoir sizes available: 3/4, 1 1/2, 2 1/2, 3, 5, and 8 gallon tanks
- Release valves are available for manual operations or with an air pilot signal for automated operations
- High pressure parallel threaded ports for pressure connection
- Available with pressure switches and transducers
- Complete power units with release valves, reservoirs, air regulators, protective frames, and gauges are available as well as custom configurations

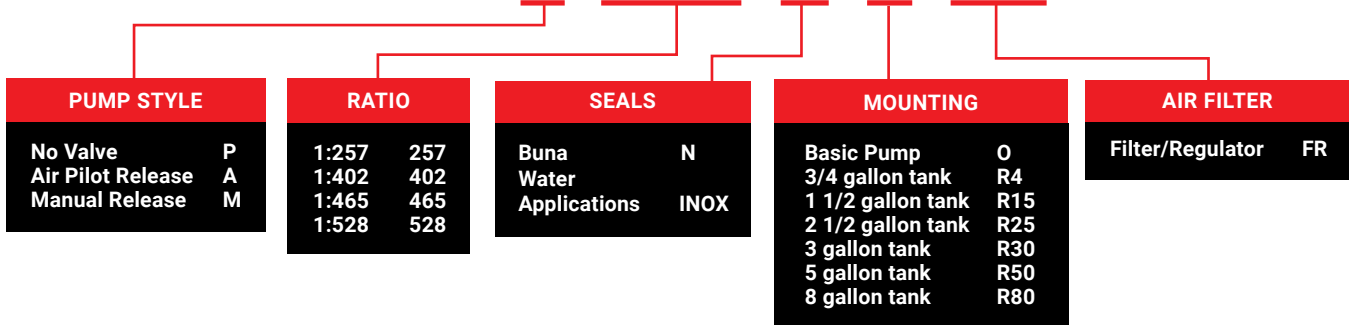
P830 Series P830-257 P830-402 P830-465 P830-582

Air Pressure PSI (Bar)	30-100 PSI (2 - 7)			
Nominal Pressure Ratio	1:257	1:402	1:465	1:582
Max Oil Pressure PSI (Bar)	24,100 PSI (1,661)	38,000 PSI (2,620)	43,600 PSI (3,006)	50,000 PSI (3,447)
Flow CI/Min	49 CI/MIN	31 CI/MIN	26 CI/MIN	17 CI/MIN
Weight: Lbs (Kg)	31 LBS (14)			

NOTE: Always fit an air filter/regulator with 20 micron rating and 30 scfm capacity.

Ordering Information:

P830P-402-N-O-FR

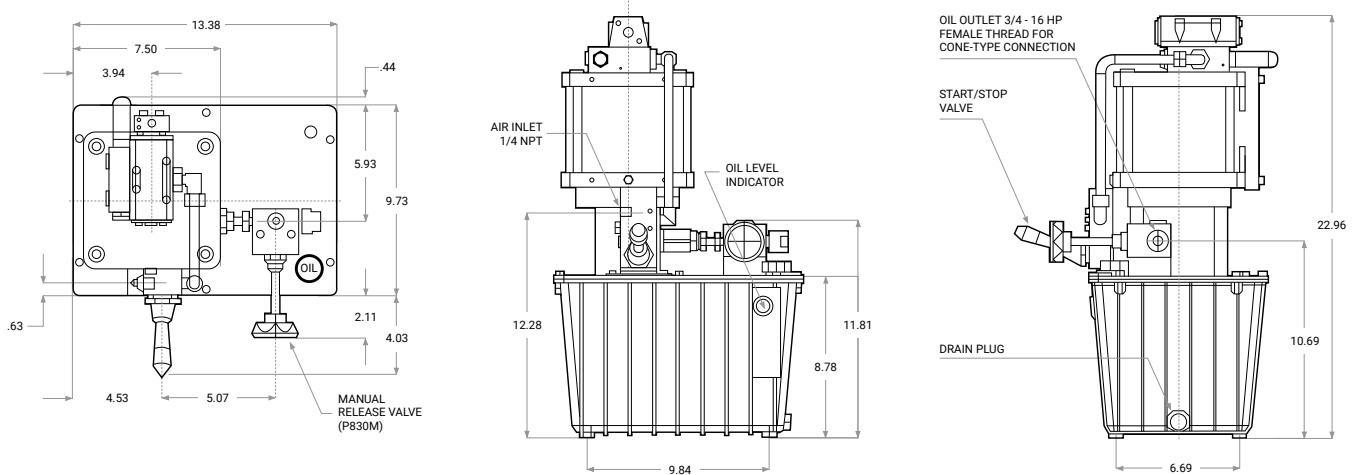


Example Order: P830P-10-N-O-FR = P830 pump without valve, a 1:10 ratio, Buna seals, a basic pump, and an air filter/regulator.

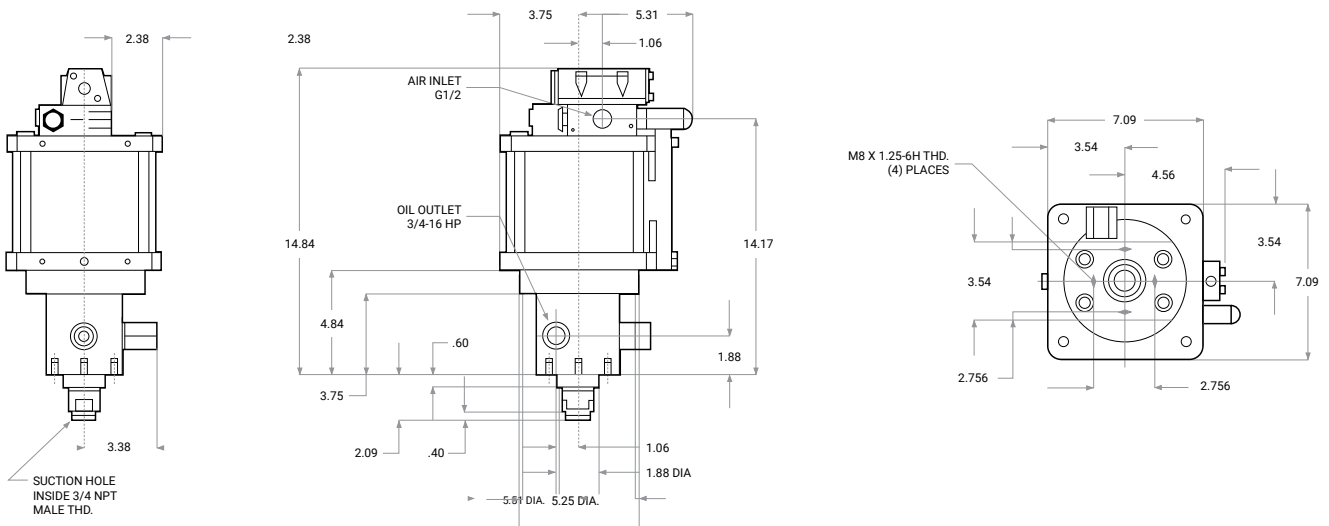
P830 SERIES

Dimensional Data:

Pump Dimensions with Manual Release Valve 2 1/2 Gallon Tank (Type R25)

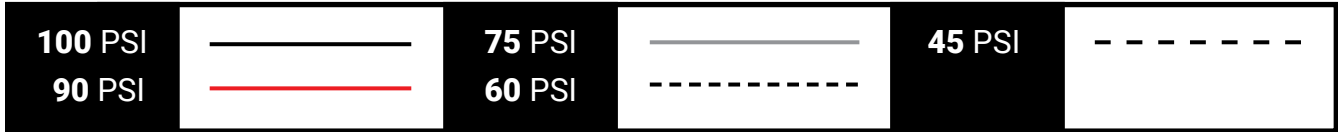


Pump Dimensions for P830P with No Reservoir

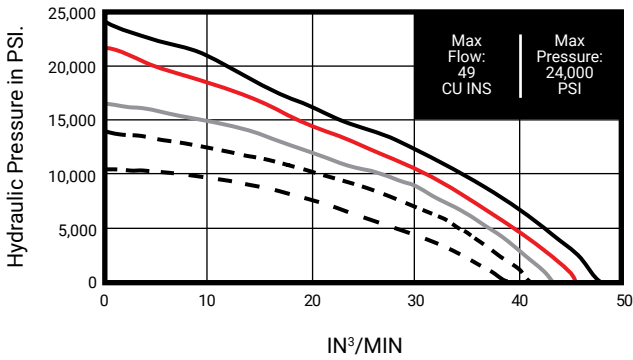


P830 SERIES

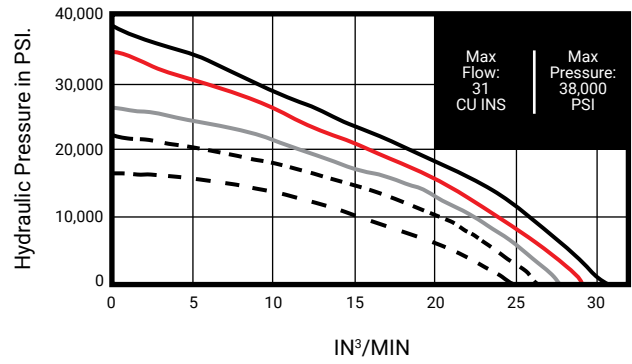
Performance Guides:



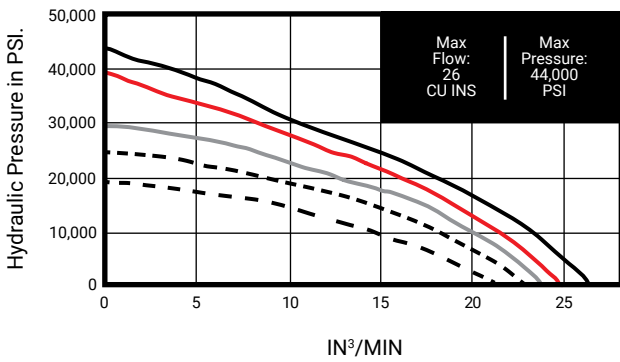
P830-257 Fluid Flow Against Pressure



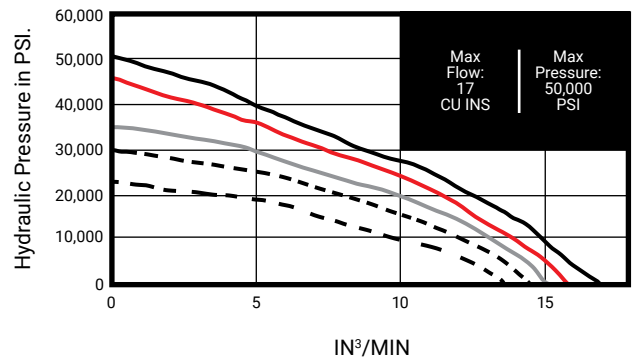
P830-402 Fluid Flow Against Pressure



P830-465 Fluid Flow Against Pressure



P830-528 Fluid Flow Against Pressure



P901 SERIES



P901-100-N-0-L with Manifold

Applications:



Intermittent Operations



Pressure Sustaining



Portable Equipment



Hazardous Areas



Clamping



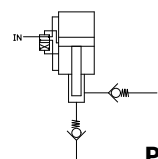
Workholding

Description

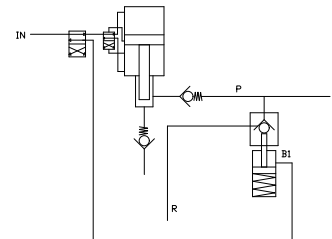
- Double acting pneumatic/single acting hydraulic
- Designed to be used in conjunction with manifolds utilizing cartridge valves or DO3 type valves
- Modular construction and small envelope size
- 10,000 PSI maximum hydraulic pressure
- Up to 1 GPM flow
- Seven intensification ratios available

Schematics

P901



P901A



HYDRONIC WARRANTY POLICY: Hydronic, Corp. warrants each product against defects in material and workmanship for a period of 6 months from the date of manufacturing providing its use was in accordance with Hydronic recommendations. If the product fails to perform as warranted, Hydronic will, at its option, repair or replace the product free of charge. The company will not be liable for incidental or consequential damages. We make no other warranty, expressed or implied, including warranties of merchant ability or fitness for a particular purpose.

P901 SERIES



P901P
with
1/2
Gallon
Tank

P901P
with
Manifold



Features:

- Seven ratios available with reservoirs and sub-plates
- High performance, double acting pneumatic motor
- Miniature sizes with good flow rates per minute
- Self-limiting design for maximum cyclic speeds
- Pressure sustaining feature for clamping and work holding
- Manifold interface eliminates screwed connections
- Ideal for cartridge valves and stacking modules
- Reservoirs and custom manifolds available
- Complete power units with valves, reservoirs, air regulators, and gauges are available

P901 Series	P901-6	P901-10	P901-20	P901-40	P901-60	P901-80	P901-100
Air Pressure PSI (Bar)	20 -100 PSI (1 1/2 - 7)						
Nominal Pressure Ratio	1:6	1:10	1:20	1:40	1:60	1:80	1:100
Max Oil Pressure PSI (Bar)	600 PSI (41)	1,050 PSI (69)	1,950 PSI (137)	4,200 PSI (290)	6,200 PSI (425)	7,800 PSI (540)	10,000 PSI (690)
Flow GPM	250 CI/MIN	140 CI/MIN	65 CI/MIN	38 CI/MIN	25 CI/MIN	20 CI/MIN	15 CI/MIN
Weight: Pump Only (Kg)	6.5 LBS (3)			5.25 LBS (2.5)			

NOTE: Always fit an air filter/regulator with 20 micron rating and 30 scfm capacity.

Ordering Information:

P901P-20-N-T15-P-FR

AIR FILTER

Filter/
Regulator FR

PUMP STYLE

Basic Pump Only P
Automatic Release Valve Normally closed A
Automatic Release Valve Normally open O

RATIO

1:6 6
1:10 10
1:20 20
1:40 40
1:60 60
1:80 80
1:100 100

SEALS

Buna N
Flourocarbon V

MOUNTING

Basic Pump Only 0
1/2 gallon tank T050
1 gallon tank T10
1 1/2 gallon tank T15

FLUID CONNECTIONS

Basic Pump Only O
Line Mounting L
D03 Manifold DH
Standard Manifold P
Hi/Low Manifold HL
Standard Manifold with N/C Automatic Release Valve PA
Standard Manifold with N/O Automatic Release Valve (Only 6 - 1:40) PO

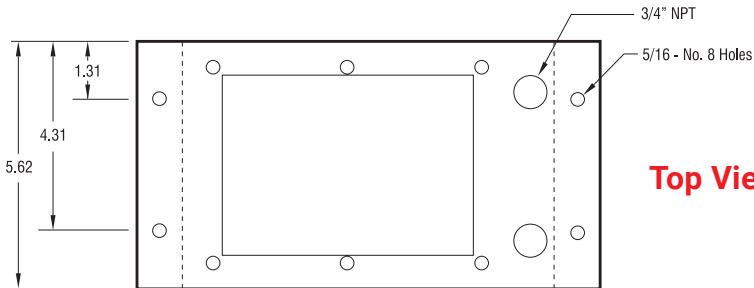
*O is for ratios 6-20:1 only

EXAMPLE ORDER: P901P-20-N-T15-P-FR

= P901 pump with no release valve, a 1:20 ratio, Buna seals, a 1 1/2 gallon tank, a standard manifold, and an air filter/regulator.

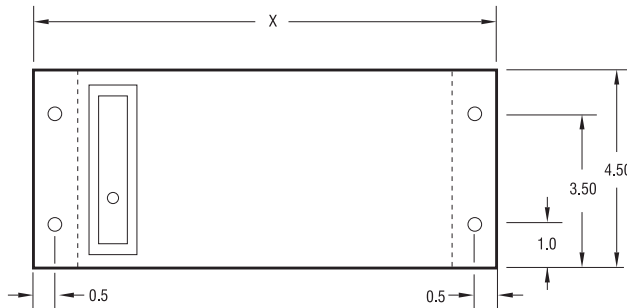
P901 SERIES

Reservoir Dimensions



Top View

Front View



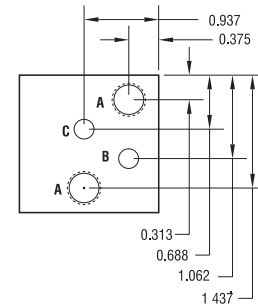
Gal	Designation	Dim	Weight # (kg)
0.5	T050	10.5	8 (3.7)
1.0	T10	13.5	10 (4.5)
1.5	T15	17.5	13 (5.9)

Manifold Footprint

High Pressure

Fluid Connection 1/4" NPT

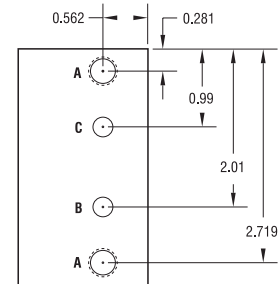
A = 3/8-16 tapped holes
B = 0.25" suction port
C = 0.25" outlet port



Low Pressure

Fluid Connection #6 SAE

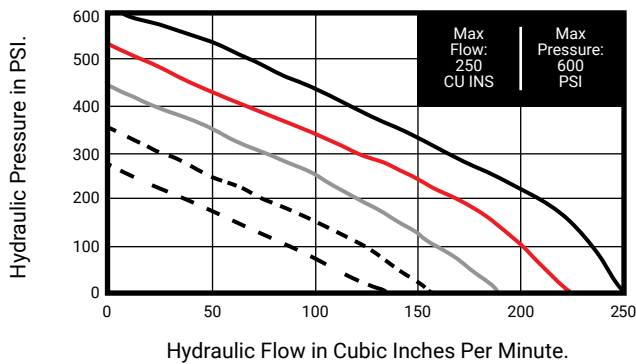
A = 5/16-18 tapped holes
B = 0.25" suction port
C = 0.25" outlet port



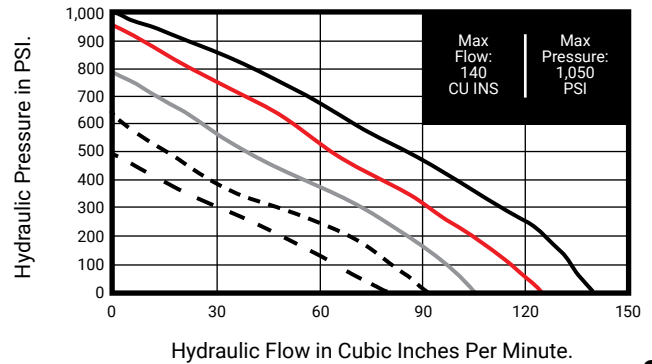
Performance Guides:



P901-6 Fluid Flow Against Pressure



P901-10 Fluid Flow Against Pressure

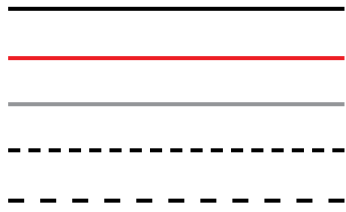


P901 SERIES

Performance Guides:

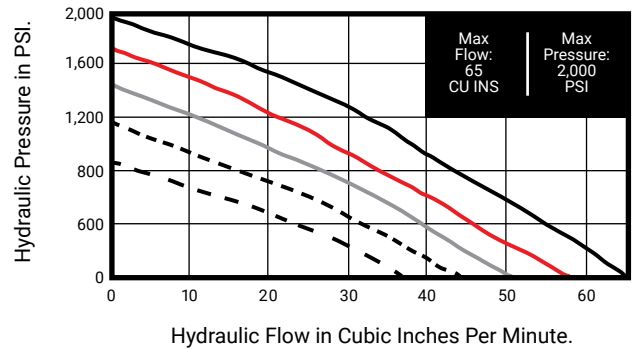
AIR PRESSURE:

100 PSI
90 PSI
75 PSI
60 PSI
45 PSI



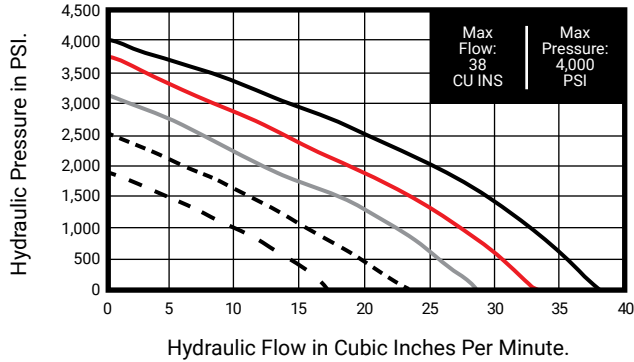
P901-20

Fluid Flow Against Pressure



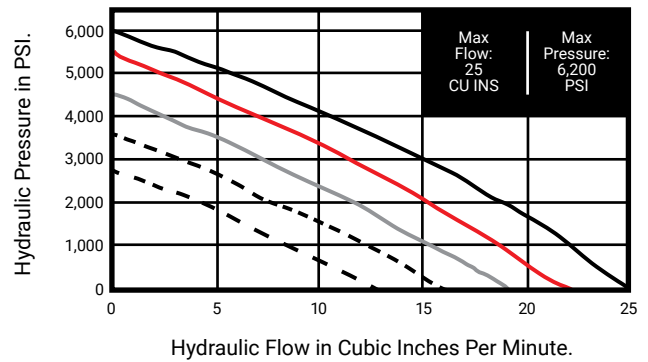
P901-40

Fluid Flow Against Pressure



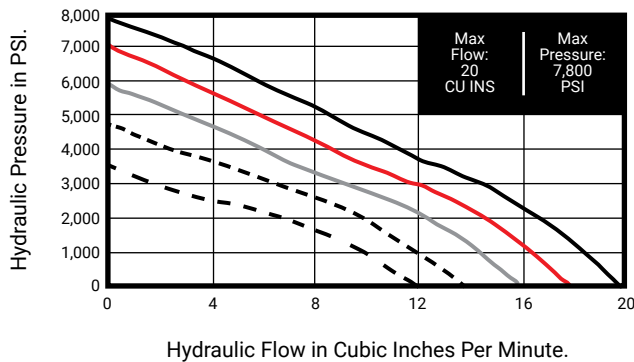
P901-60

Fluid Flow Against Pressure



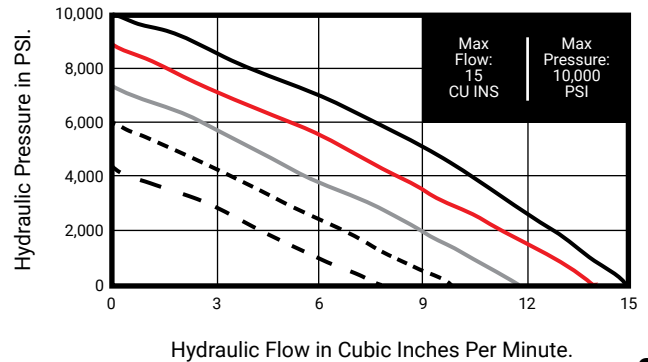
P901-80

Fluid Flow Against Pressure



P901-100

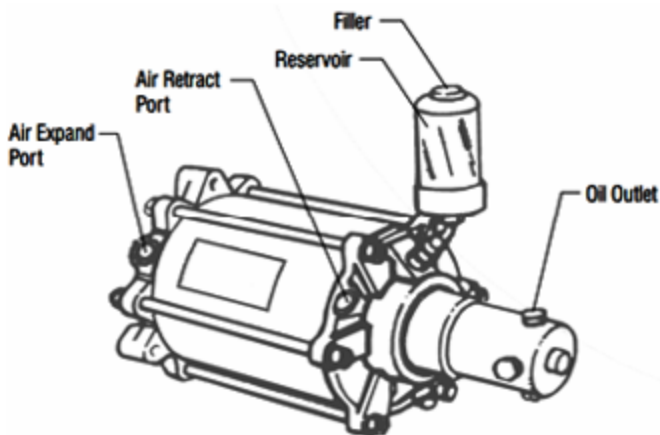
Fluid Flow Against Pressure



BOOSTERS

TABLE OF CONTENTS

B822 Air-Air	Air Pressures 120 – 2,000 psi	35
M840 Air-Oil	Hydraulic Pressures to 3,900 psi	39
M845 Air-Oil	Hydraulic Pressures to 10,000 psi	42
M850 Air-Oil	Hydraulic Pressures to 6,400 psi	45



M850-30-N Layout

Features

- All Hydronic boosters offer instantaneous force and repeatable precision
- All Hydronic boosters provide automatic leakage compensation
- All Hydronics M800 Series boosters come equipped with a transparent oil container for easy inspection of oil levels
- Our B822 air-air booster offers a high flow capacity air valve available for use with air and other gases

Applications:



Workholding



High Pressure Testing

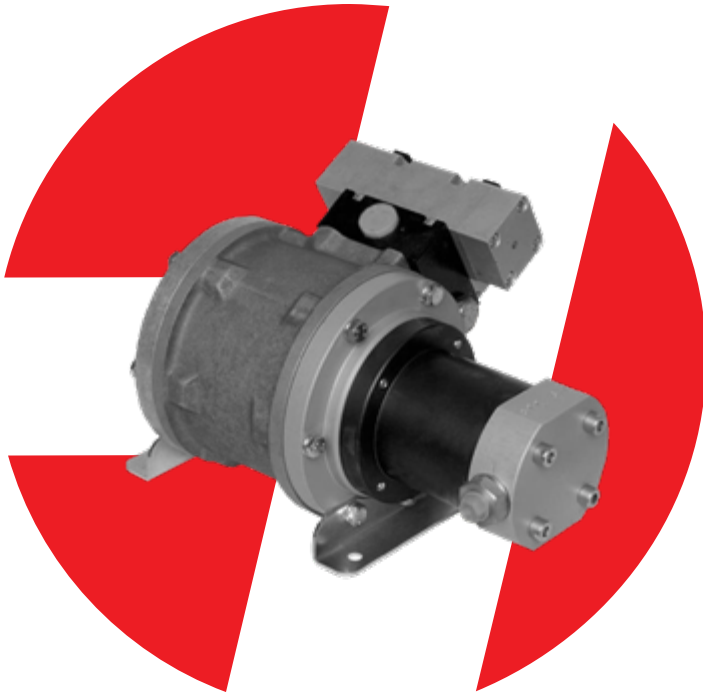


Clamping



Hazardous Areas

B822 SERIES



B822-4-N-W

Applications:



Workholding



High Pressure
Testing



Clamping



Hazardous
Areas

Description

- Continuous cycle, air-air booster
- Single acting, high-pressure pneumatic pump with a double acting piston
- Raises the inlet pressure according to the chosen multiplication ratio
- Automatically compensates for leaks while maintaining the desired pressure
- Powered by compressed air to compress air or other gases
- 2,030 PSI maximum pressure
- Four intensification ratios available

HYDRONIC WARRANTY POLICY: Hydronic, Corp. warrants each product against defects in material and workmanship for a period of 6 months from the date of manufacturing providing its use was in accordance with Hydronic recommendations. If the product fails to perform as warranted, Hydronic will, at its option, repair or replace the product free of charge. The company will not be liable for incidental or consequential damages. We make no other warranty, expressed or implied, including warranties of merchant ability or fitness for a particular purpose.

B822 SERIES

B822

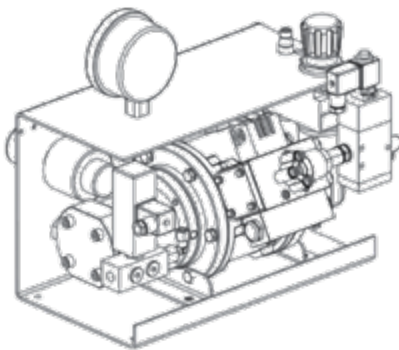


B822 Series B822-4 B822-6.7 B822-10.5 B822-20

Air Pressure PSI (Bar)	30 - 100 PSI (2 - 7)			
Nominal Pressure Ratio	1:4	1:6.7	1:10.5	1:20
Max Nominal Pressure PSI (Bar)	406 PSI (28)	682 PSI (47)	1,066 PSI (73.5)	2,030 PSI (140)
Air Consumption	1000 NI/MIN.			
Noise Levels	78-80 dB			
Temperature range °F (°C)	41° - 176° (5° - 80°)			
Standard Booster Weight Lbs (Kg)	26 LBS (12)			

Features:

- High flow capacity air valve
- Four multiplication ratios that provide pressures from 406 to 2,030 PSI
- 1/2" NPT air drive connection
- 1/4" NPT air pump connections
- Input air pressures from 30 to 100 PSI
- Horizontal and vertical mounting capabilities
- Compact dimensions
- Available for use with air and other gases



Ordering Information:

B822-4-N-W

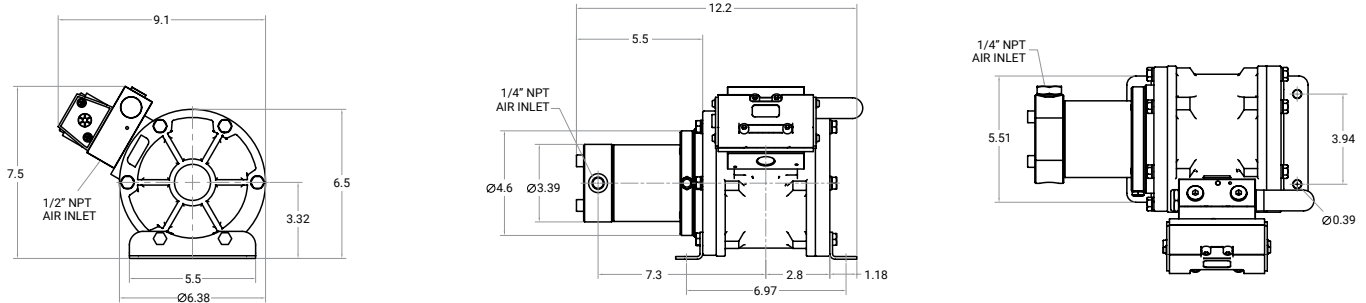
RATIO		SEALS		MOUNTING	
1:4	4	Buna	N	Wall Brackets	W
1:6.7	6.7			No Brackets	
1:10.5	10.5			Basic Booster Only	O
1:20	20				

Example Order: B822-4-N-W = B822 air:air booster with a 1:4 ratio, Buna seals, and wall brackets.

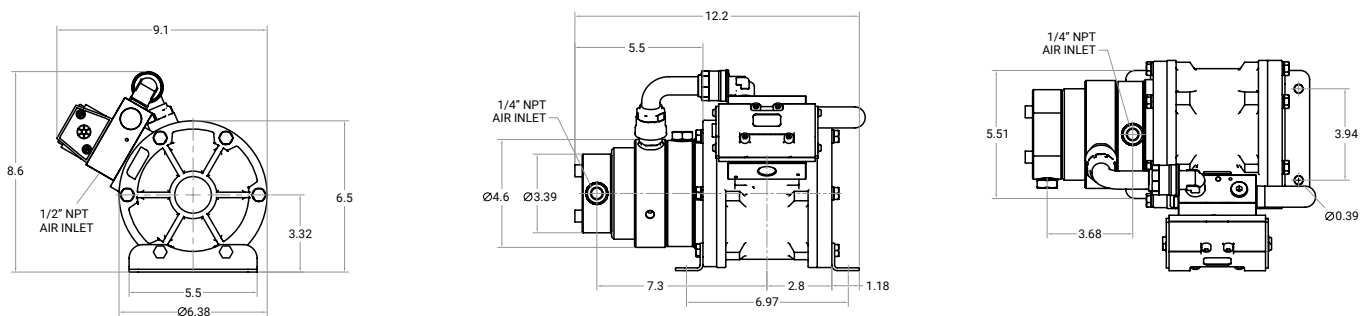
B822 SERIES

Dimensional Data:

Pump Dimensions with Ratios 1:4, 1:6.7, and 1:10.5

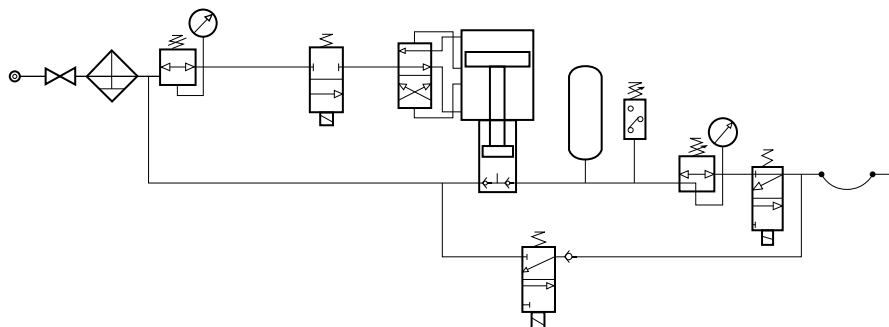


Pump Dimensions with Ratio 1:20



Application Example

B822 air-air pump with a filter/regulator, lever-operated control valve, pressure gauge, air pressure regulator, pressure switch, pump control solenoid valve and protective framework, and assembly of all components.

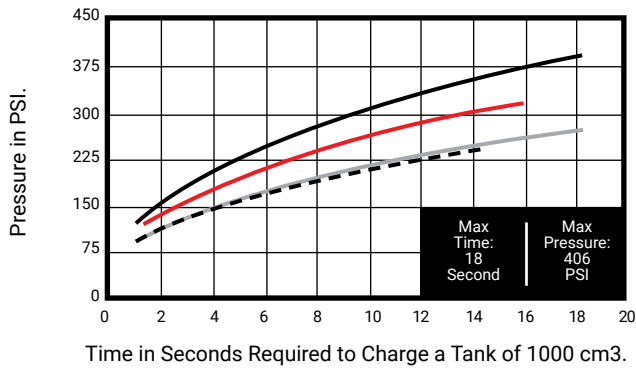


B822 SERIES

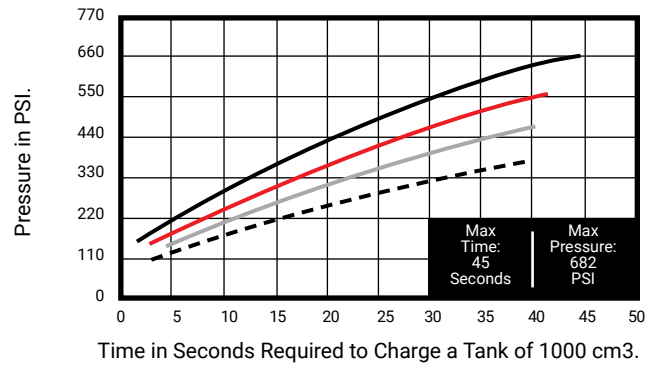
Performance Guides:



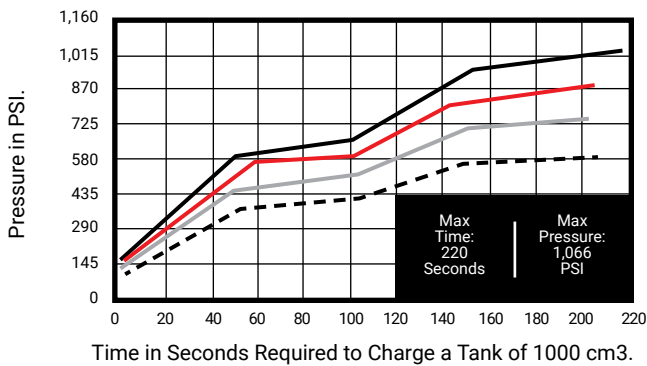
B822-4 Time Against Pressure



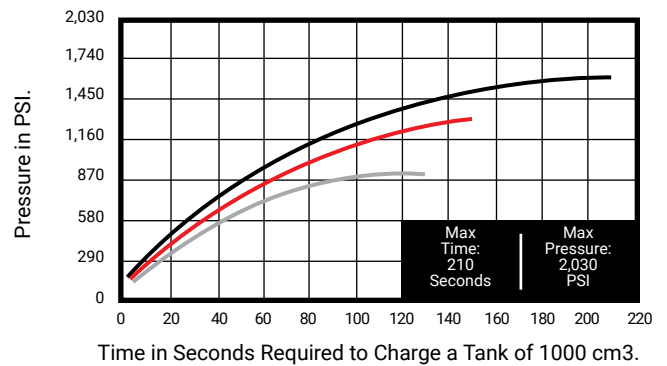
B822-6.7 Time Against Pressure



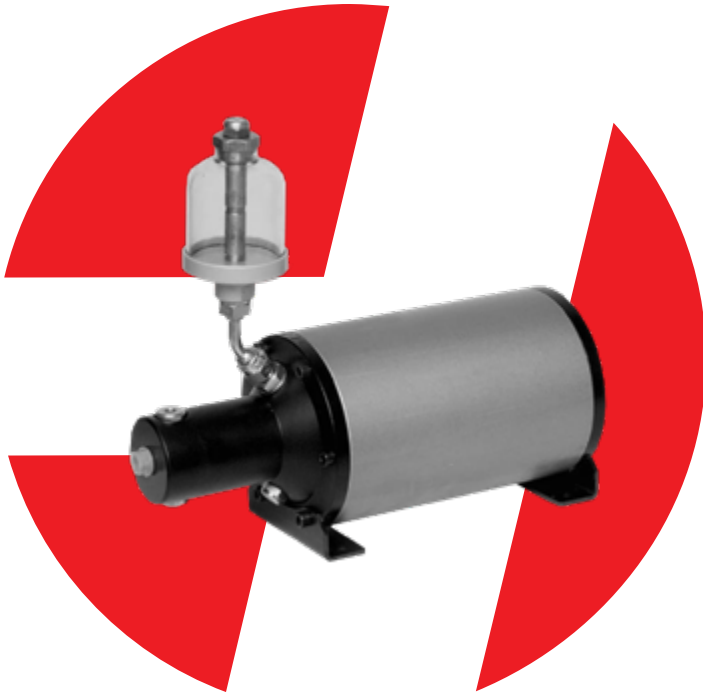
B822-10.5 Time Against Pressure



B822-20 Time Against Pressure



M840 SERIES



M840-16-N

Applications:



Workholding



**High Pressure
Testing**



Clamping



**Hazardous
Areas**

Description

- Compact, single acting air-oil booster
- Air is supplied to the pneumatic circuit by means of a 3-way, 2-position air valve, with pneumatic piston return provided by a strong coil spring
- Transparent oil container for easy visual inspection of the oil level
- 3,900 PSI maximum hydraulic pressure
- Four intensification ratios available

HYDRONIC WARRANTY POLICY: Hydronic, Corp. warrants each product against defects in material and workmanship for a period of 6 months from the date of manufacturing providing its use was in accordance with Hydronic recommendations. If the product fails to perform as warranted, Hydronic will, at its option, repair or replace the product free of charge. The company will not be liable for incidental or consequential damages. We make no other warranty, expressed or implied, including warranties of merchant ability or fitness for a particular purpose.

M840 SERIES

M840



M840 Series M840-8 M840-16 M840-25 M840-39

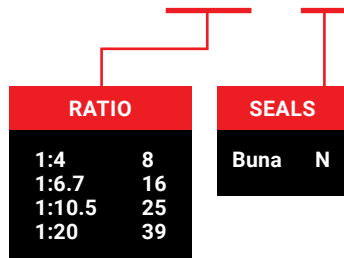
Air Pressure PSI (Bar)	30-100 PSI (2 - 7)			
Nominal Pressure Ratio	1:8	1:16	1:25	1:39
Max Oil Pressure PSI (Bar)	800 PSI (56)	1,600 PSI (112)	2,500 PSI (175)	3,900 PSI (273)
Oil Volume Cubic Inches (Cubic Centimeters)	6 CU. IN. (105)	3 CU. IN. (49)	2 CU. IN. (34.5)	1 CU. IN. (22)
Standard Booster Weight Lbs (Kg)	11 LBS (5)			

Features:

- Four multiplication ratios that provide hydraulic pressures from 800 to 3,900 PSI
- Oil volume of up to 6 cubic inches
- Versions available for corrosive environments
- Horizontal and vertical mounting capabilities
- Compact dimensions
- Three oil outlets
- Anodized aluminum construction and chromed steel hydraulic piston, which ensures durability and a large number of high-speed cycles
- Booster provides automatic leakage compensation
- Clear oil container that provides easy visual inspection of the oil level

Ordering Information:

M840-16-N

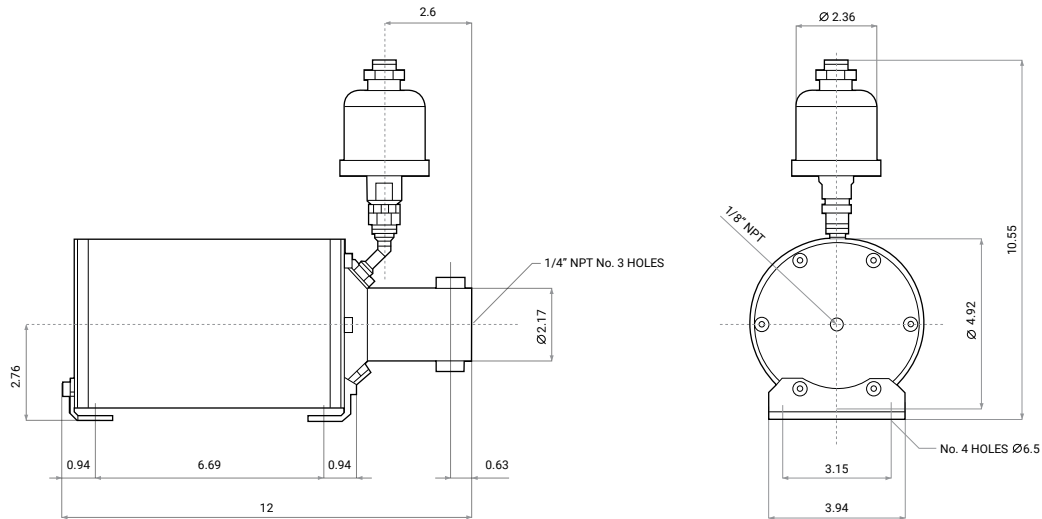


Example Order: M840-16-N = M840 air:oil booster with a 1:16 ratio and Buna seals.

M840 SERIES

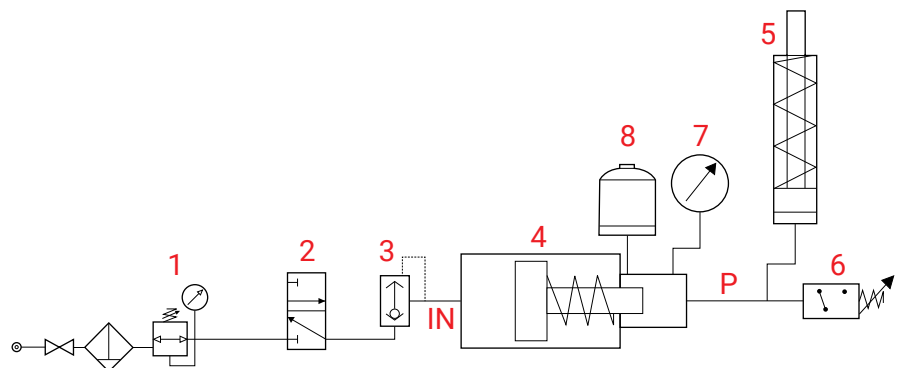
Dimensional Data:

M840 Standard



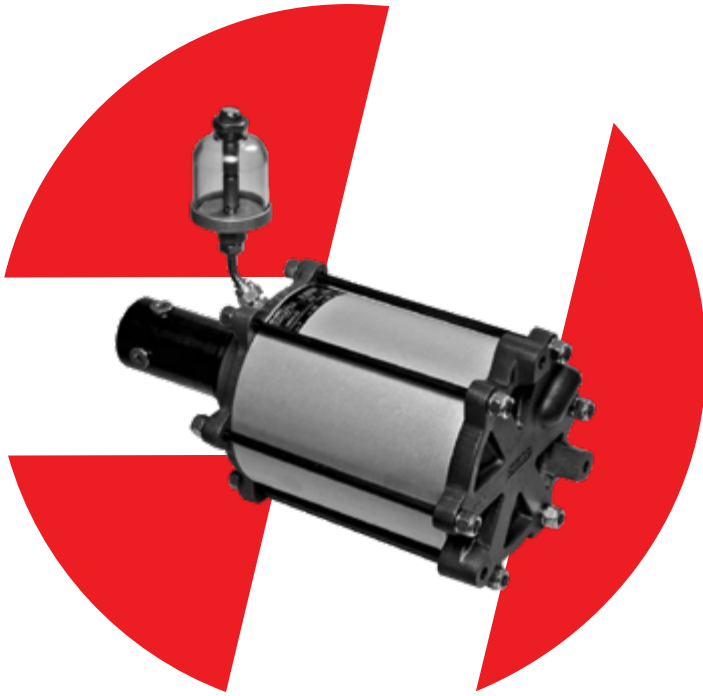
Application Example

- 1: Filter/regulator
- 2: 3-way, 2-position air valve
- 3: Quick discharge valve
- 4: M840 booster
- 5: Cylinder
- 6: Pressure switch
- 7: Oil pressure gauge
- 8: Oil reservoir
- IN: Booster air inlet line
- P: Oil outlet line



This application allows a line of single acting cylinders to be operated with very fast cycles, with the pressure switch ensuring that the hydraulic pressure remains within the desired range.

M845 SERIES



M845-33-N

Applications:



Workholding



**High Pressure
Testing**



Clamping



**Hazardous
Areas**

Description

- Single acting air-oil booster
- Air is supplied to the pneumatic circuit by means of a 3-way, 2-position air valve, with pneumatic piston return provided by a pair of strong coil springs
- Transparent oil container for easy visual inspection of the oil level
- 10,000 PSI maximum hydraulic pressure
- Cost effective method of developing high-pressure hydraulics
- Four intensification ratios available

HYDRONIC WARRANTY POLICY: Hydronic, Corp. warrants each product against defects in material and workmanship for a period of 6 months from the date of manufacturing providing its use was in accordance with Hydronic recommendations. If the product fails to perform as warranted, Hydronic will, at its option, repair or replace the product free of charge. The company will not be liable for incidental or consequential damages. We make no other warranty, expressed or implied, including warranties of merchant ability or fitness for a particular purpose.

M845 SERIES

M845



M845 Series M845-16 M845-33 M845-64 M845-100

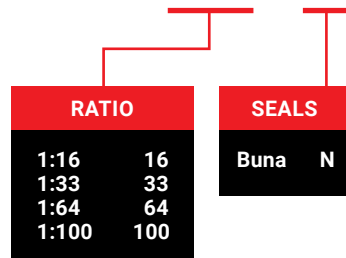
Air Pressure PSI (Bar)	30-100 PSI (2 - 7)			
Nominal Pressure Ratio	1:16	1:33	1:64	1:100
Max Oil Pressure PSI (Bar)	1,600 PSI (112)	3,300 PSI (231)	6,400 PSI (448)	10,000 PSI (700)
Oil Volume Cubic Inches (Cubic Centimeters)	8 CU. IN. (137)	3.5 CU. IN. (57)	2 CU. IN. (34)	1 CU. IN. (22)
Standard Booster Weight Lbs (Kg)	33 LBS (15)			

Features:

- Four multiplication ratios that provide hydraulic pressures from 1,600 to 10,000 PSI
- Oil volume of up to 8 cubic inches
- Versions available for corrosive environments
- Horizontal and vertical mounting capabilities
- Five oil outlets
- Anodized aluminum construction and chromed steel hydraulic piston, which ensures durability and a large number of high-speed cycles
- Booster provides automatic leakage compensation
- Clear oil container that provides easy visual inspection of the oil level

Ordering Information:

M845-33-N

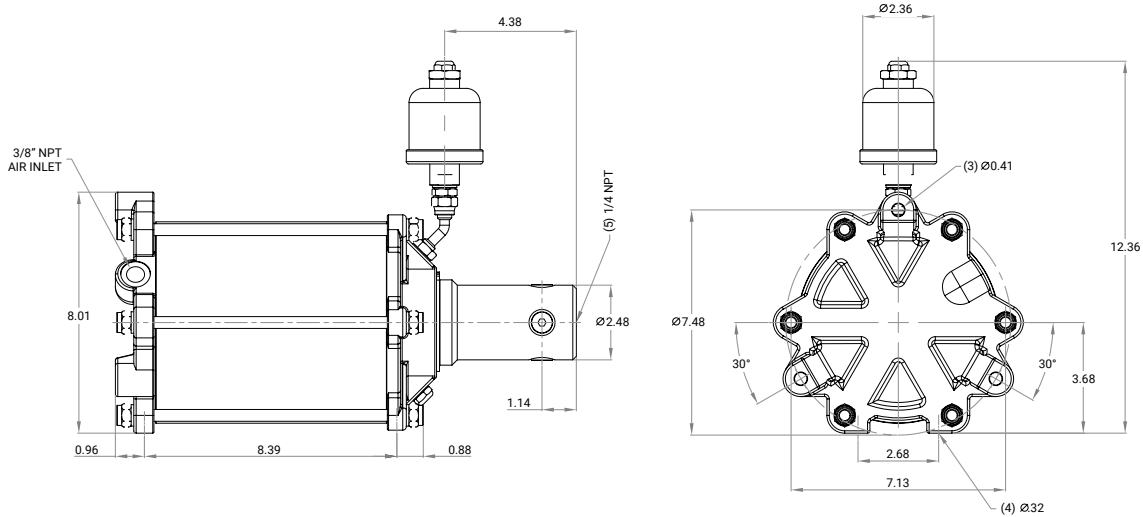


Example Order: M845-33-N = M845 air:oil booster with a 1:33 ratio and Buna seals.

M845 SERIES

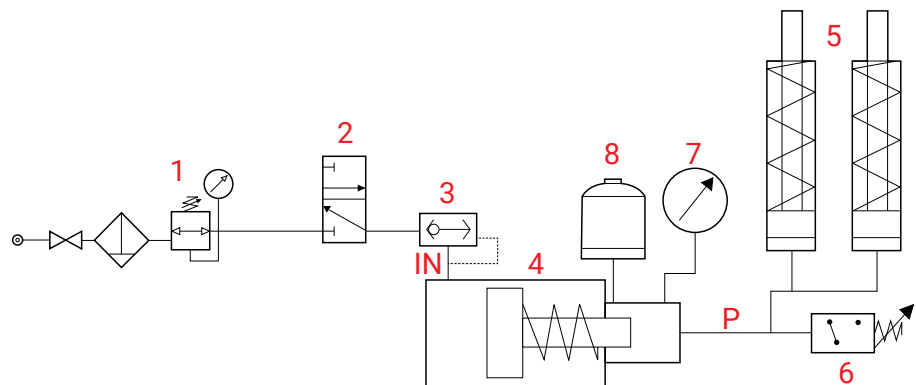
Dimensional Data:

M845 Standard



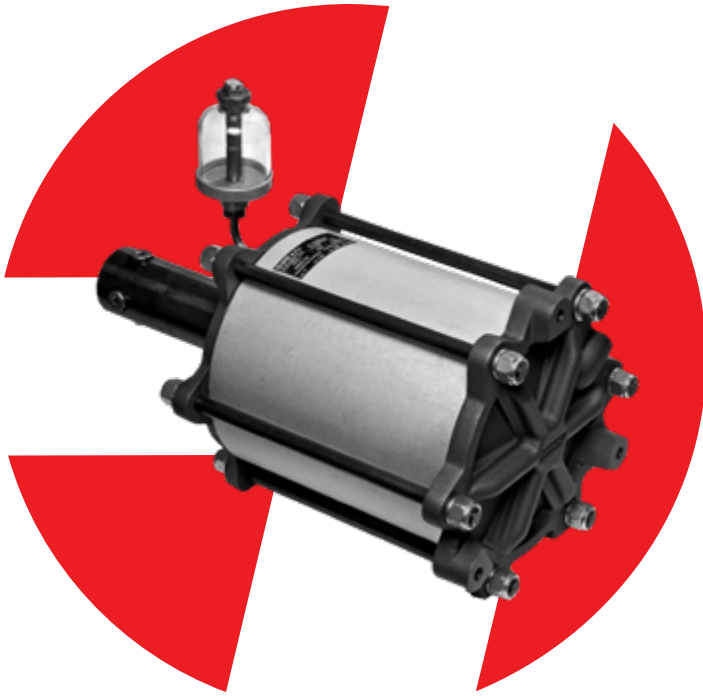
Application Example

- 1: Filter/regulator
- 2: 3-way, 2-position air valve
- 3: Quick discharge valve
- 4: M845 booster
- 5: Cylinder
- 6: Pressure switch
- 7: Oil pressure gauge
- 8: Oil reservoir
- IN: Booster air inlet line
- P: Oil outlet line



This application allows a line of single acting cylinders to be operated with very fast cycles, with the pressure switch ensuring that the hydraulic pressure remains within the desired range.

M850 SERIES



M850-30-N

Applications:



Workholding



**High Pressure
Testing**



Clamping



**Hazardous
Areas**

Description

- Large, double acting air-oil booster
- Air is supplied to the pneumatic circuit by means of a 5-way, 2-position air valve
- Transparent oil container for easy visual inspection of the oil level
- 6,400 PSI maximum hydraulic pressure
- Four intensification ratios available

HYDRONIC WARRANTY POLICY: Hydronic, Corp. warrants each product against defects in material and workmanship for a period of 6 months from the date of manufacturing providing its use was in accordance with Hydronic recommendations. If the product fails to perform as warranted, Hydronic will, at its option, repair or replace the product free of charge. The company will not be liable for incidental or consequential damages. We make no other warranty, expressed or implied, including warranties of merchant ability or fitness for a particular purpose.

M850 SERIES

M850

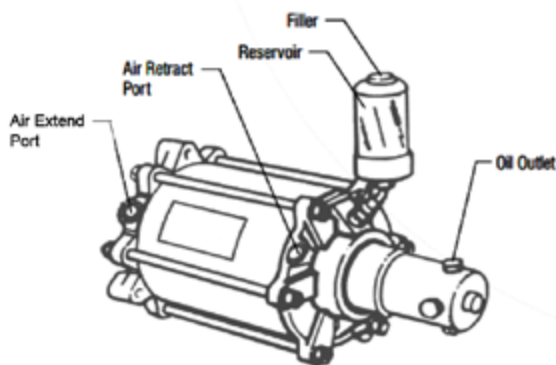


M850 Series M850-16 M850-30 M850-44 M850-64

Air Pressure PSI (Bar)	30-100 PSI (2 - 7)			
Nominal Pressure Ratio	1:16	1:30	1:44	1:64
Max Oil Pressure PSI (Bar)	1,600 PSI (112)	3,000 PSI (206)	4,400 PSI (308)	6,400 PSI (448)
Oil Volume Cubic Inches (Cubic Centimeters)	17 CU. IN. (280)	9 CU. IN. (145)	6 CU. IN. (101.5)	4 CU. IN. (71)
Standard Booster Weight Lbs (Kg)	42 LBS (19 KG)			

Features:

- Four multiplication ratios that provide hydraulic pressures from 1,600 to 6,400 PSI
- Oil volume of up to 17 cubic inches
- Horizontal and vertical mounting capabilities
- Five oil outlets
- 360° availability of oil ports
- Automatic air venting
- Anodized aluminum construction and chromed steel hydraulic piston, which ensures durability and a large number of high-speed cycles
- Booster provides automatic leakage compensation
- Clear oil container that provides easy visual inspection of the oil level



Ordering Information:

M850-30-N

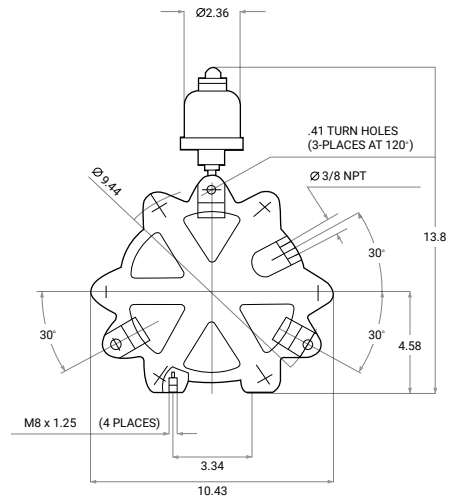
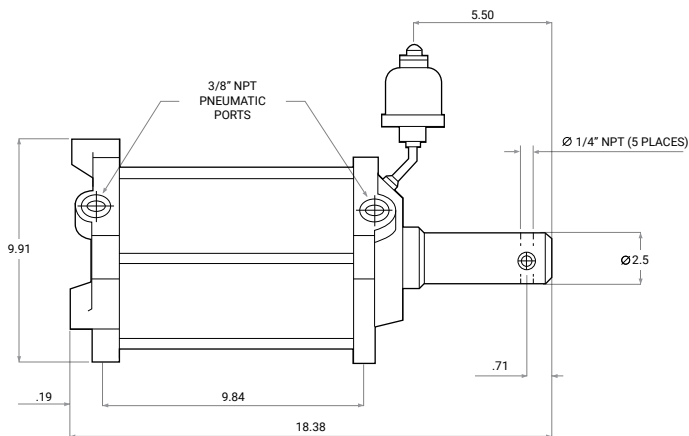
RATIO		SEALS	
1:16	16	Buna	N
1:30	30		
1:44	44		
1:64	64		

Example Order: M850-30-N = M850 air:oil booster with a 1:30 ratio and Buna seals.

M850 SERIES

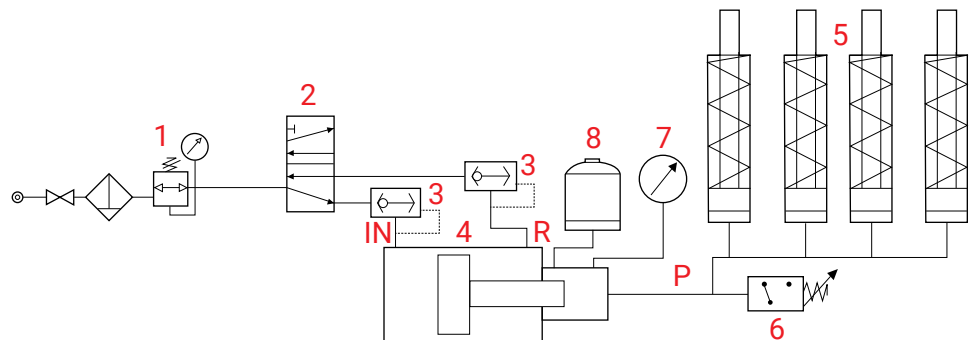
Dimensional Data:

M850 Standard



Application Example

- 1: Filter/regulator
- 2: 5-way, 2-position air valve
- 3: Quick discharge valve
- 4: M850 booster
- 5: Cylinder
- 6: Pressure switch
- 7: Oil pressure gauge
- 8: Oil reservoir
- IN: Booster air inlet line
- P: Oil outlet line

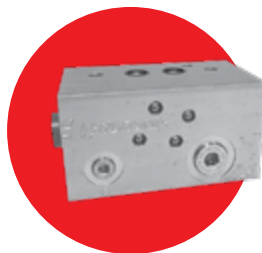
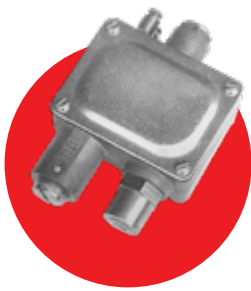


This application allows a line of single acting cylinders to be operated with very fast cycles, with the pressure switch ensuring that the hydraulic pressure remains within the desired range.

ACCESSORIES

TABLE OF CONTENTS

A880 Pressure Switch	49
P820 Smoothing Kit	51
Air Preparation Equipment	52
Manifold Blocks	53
Gauges	57
Reservoirs	58



Applications:

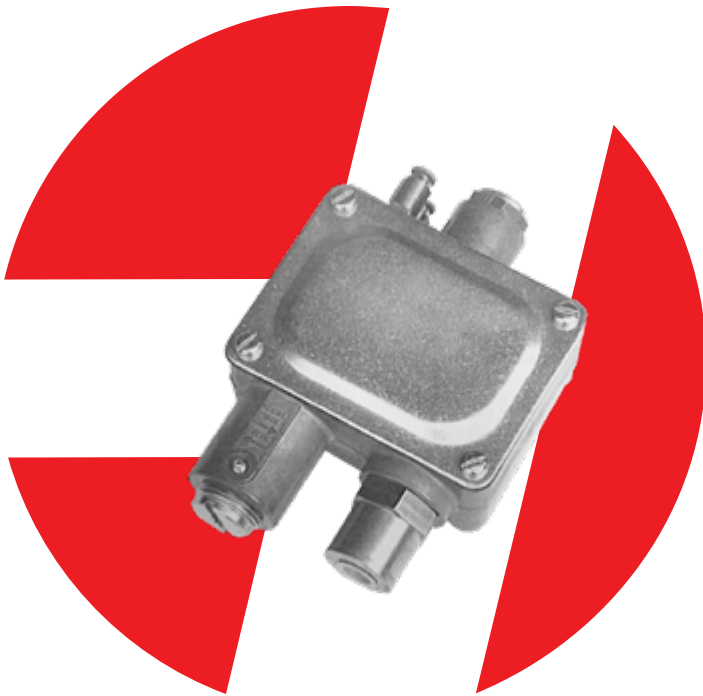


Pressure Sustaining



Production Riveting

A880 Pressure Switch



A880-APS-06-NC Pressure Switch

Applications:



Production Riveting



Workholding



Clamping



Intermittent Operations



Portable Equipment

Description

- A hydraulic device that sends air signals to other devices once a preset pressure is reached
- Signals can be used to alert operators, to trigger another valve's operation, or to shortcut a circuit to default to a safe condition
- The air signal makes this device particularly useful in environments where an electrical signal would be dangerous
- Normally open and normally closed switches available

HYDRONIC WARRANTY POLICY: Hydronic, Corp. warrants each product against defects in material and workmanship for a period of 6 months from the date of manufacturing providing its use was in accordance with Hydronic recommendations. If the product fails to perform as warranted, Hydronic will, at its option, repair or replace the product free of charge. The company will not be liable for incidental or consequential damages. We make no other warranty, expressed or implied, including warranties of merchant ability or fitness for a particular purpose.

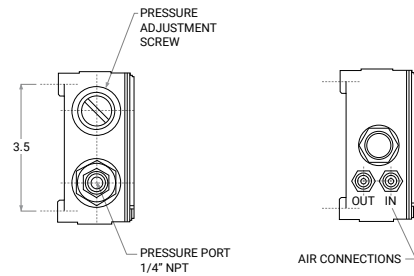
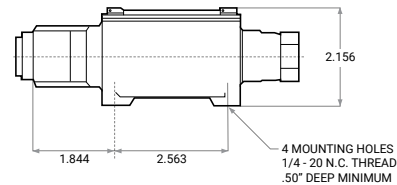
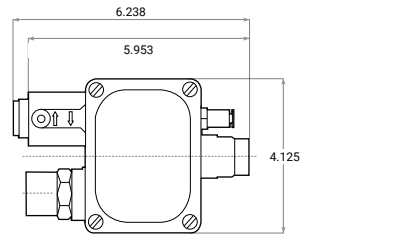
A880 Pressure Switch



Features:

- Seven models covering pressures from 40 to 12,000 PSI
- Stainless steel switch body
- Rigid cast metal housing
- External adjustment
- 1/4" NPT oil connection
- Input air pressures of 30 – 120 PSI
- 5/32" OD air tube connections
- Buna O-ring seals
- Normally open and normally closed switches available

Dimensional Data:



Ordering Information:

A880-APS-06-NC

ACCESSORY		PRESSURE RANGES (PSI)		SWITCH	
Air Pressure Switch	APS	01	40 – 250	Normally Closed	NC
		02	60 – 500	Normally Closed	NO
		03	115 – 1,500		
		04	240 – 3,000		
		05	240 – 5,000		
		06	815 – 10,000		
		12	815 – 12,000		

Example Order: A880-APS-06-NC = A880 air operated pressure switch with an 815 to 10,000 PSI pressure range and a normally closed switch.

P820 Smoothing Kit



A820-XX-N-SSM

Ordering Information:

A820-XX-N-SSM

SMOOTHING KITS

A820-XX-N-SSM	Standard Smoothing kit Manifold mounted for 5-30:1 Ratios
A820-40-N-SSM	Standard Smoothing kit Manifold mounted for 40:1 Ratio
A820-XX-N-NSM-*	Non-Standard Smoothing kit Manifold mounted for 5-30:1 Ratios
A820-40-N-NSM-*	Non-Standard Smoothing kit Manifold mounted for 40:1 Ratio

*Nitrogen precharge in accumulator must be specified.

Applications:



Pressure Sustaining



Intermittent Operations

Description

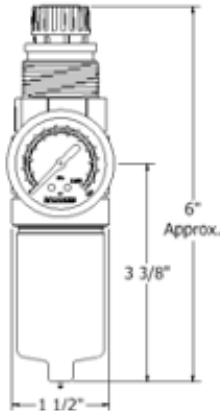
- Significantly reduces pressure pulsations created from hydraulic pumps
- Maintains a volume of pressurized fluid to absorb system shocks
- Maximum pulsation dampening occurs when installed as close to the outlet port as possible

HYDRONIC WARRANTY POLICY: Hydronic, Corp. warrants each product against defects in material and workmanship for a period of 6 months from the date of manufacturing providing its use was in accordance with Hydronic recommendations. If the product fails to perform as warranted, Hydronic will, at its option, repair or replace the product free of charge. The company will not be liable for incidental or consequential damages. We make no other warranty, expressed or implied, including warranties of merchant ability or fitness for a particular purpose.

Air Preparation Products

A range of pneumatic filter/regulators that are recommended for use with all pumps and boosters.

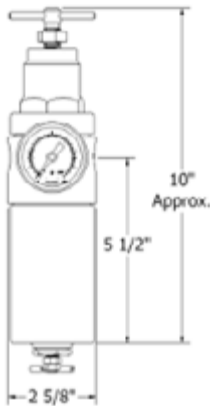
B01-3202-2GA2



Recommended for use with
P720, P801, P901 & M840 Series Units.

Ordering Specifications	Materials of Construction
Bowl Capacity: 1 oz.	Body: Machined Aluminum
Maximum Pressure Rating: 250 psi	Bonnet: Polycarbonate
Temperature Rating: 0-200° F	Bowl: Aluminum
Pressure: 10-130 psi	Seat: Nylon
Accessories & Kits	Poppet Spring: Stainless Steel
Element: 23040 - 5 micron	Whirl Disc: Aluminum
Regulator Repair Kit: 13532 - Relieving	Element: Polypropylene (5 micron)
Bowl Kit: 23534	Element Retainer: Celanese
	Poppet Valve: Buna-N
	Compression Spring: Spring Steel
	Diaphragm Assembly: Steel, Brass, Buna-N

C01-1202-4GA2



Recommended for use with
P820, P825, P826, P830, B822, M845 & M850 Series Units.

Additional options are available on request.

Ordering Specifications	Materials of Construction
Bowl Capacity: 8 oz.	Body: Machined Aluminum
Maximum Pressure Rating: 250 psi	Bonnet: Aluminum
Temperature Rating: 0-200° F	Bowl: Aluminum
Pressure: 10-130 psi	Seat: Brass
Accessories & Kits	Poppet Spring: Stainless Steel
Element: 21037 - 3 micron	Whirl Disc: Acetal
Regulator Repair Kit: 11531 - Relieving	Element: Phenolic Acrylic Fibers (3 micron)
Bowl Kit: 21558	Element Retainer: Zinc Plated Steel
	Poppet Valve: Buna-N
	Compression Spring: Spring Steel
	Diaphragm Assembly: Steel, Brass, Buna-N

HYDRONIC WARRANTY POLICY: Hydronic, Corp. warrants each product against defects in material and workmanship for a period of 6 months from the date of manufacturing providing its use was in accordance with Hydronic recommendations. If the product fails to perform as warranted, Hydronic will, at its option, repair or replace the product free of charge. The company will not be liable for incidental or consequential damages. We make no other warranty, expressed or implied, including warranties of merchant ability or fitness for a particular purpose.

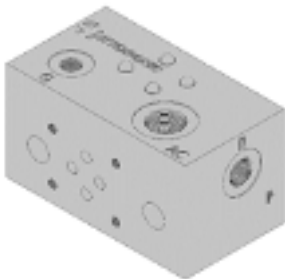
Manifold Blocks

NFPA D03/CETOP3/NG6 Mounting Pattern

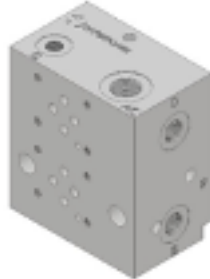
These range of manifolds mount directly to the pumps while providing 1 or 2 valve mount stations. The P901 series manifolds can be mounted directly to a reservoir.

Pump Series	Ratio	# of Stations	Part Number	Port Sizes		
				Pressure/Return	Gauge	Accumulator
P820	All	1	A820-XX-N-DSM	#6 SAE	#6 SAE	#8 SAE
	All	2	A820-XX-N-DSM2	#6 SAE	#6 SAE	#8 SAE
P901	6, 10, 20	1	S901-LP-N-6216	#4 SAE	#4 SAE	-
	40, 60, 80, 100	1	S901-HP-N-6216N	1/4" NPT	1/4" NPT	-

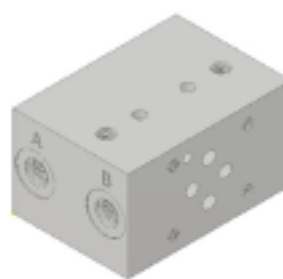
A820-XX-N-DSM



A820-XX-N-DSM2



S901-LP-N-6216



S901-HP-N-6216N



HYDRONIC WARRANTY POLICY: Hydronic, Corp. warrants each product against defects in material and workmanship for a period of 6 months from the date of manufacturing providing its use was in accordance with Hydronic recommendations. If the product fails to perform as warranted, Hydronic will, at its option, repair or replace the product free of charge. The company will not be liable for incidental or consequential damages. We make no other warranty, expressed or implied, including warranties of merchant ability or fitness for a particular purpose.

Manifold Blocks

Standard Porting

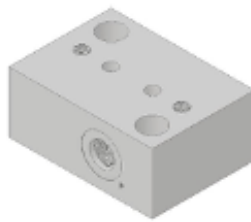
These range of manifolds mount directly to the pumps while providing fluid connections. The P901 series manifolds can be mounted directly to a reservoir.

Pump Series	Ratio	Part Number	Port Sizes	
			Pressure/Return	Gauge
P820	All	A820-XX-N-SPB	#8 SAE	#4 SAE
P901	6, 10, 20	S901-XX-N-6210	#6 SAE	-
	40, 60, 80, 100	S901-XX-N-6204	1/4" NPT	-

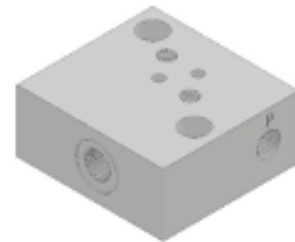
A820-XX-N-SPB



S901-XX-N-6210



S901-XX-N-6204



Side Porting

This manifold mounts directly to the pumps while providing fluid connections 90° from standard.

Pump Series	Ratio	Part Number	Port Sizes	
			Pressure/Return	Gauge
P820	All	A820-XX-N-SSPB	#8 SAE	#4 SAE

A820-XX-N-SSPB



Manifold Blocks

Smoothing Kit

This manifold mounts directly to the pumps while providing fluid standard fluid connections with an additional port for the addition of an accumulator.

Pump Series	Ratio	Part Number	Port Sizes	
			Pressure/Return	Gauge
P820	All	A820-XX-N-SKM	#8 SAE	#4 SAE

A820-XX-N-SKM

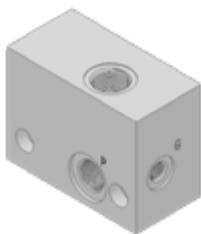


Pressure Release Valve

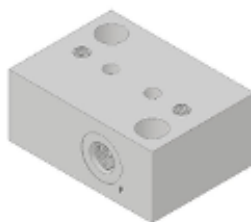
This manifold mounts directly to the pumps while providing fluid standard fluid connections with an additional port for the addition of a pressure release valve. The P901 series manifolds can be mounted directly to a reservoir.

Pump Series	Ratio	Part Number	Port Sizes	
			Pressure/Return	Gauge
P820	All	A820-XX-N-PRV	#8 SAE	#4 SAE
P901	6, 10, 20	S901A-XX-N-6210	#6 SAE	-
	40, 60, 80, 100	S901A-XX-N-6204	1/4" NPT	-

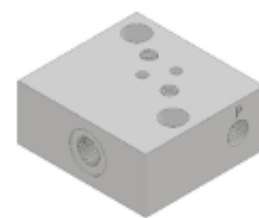
A820-XX-N-PRV



S901A-XX-N-6210



S901A-XX-N-6204



Manifold Blocks

Hi/Lo Manifold

This manifold mounts directly to the pumps while providing standard fluid connections with an additional port for the addition of an accumulator.

Pump Series	Ratio	Part Number	Port Sizes	
			Pressure/Return	Gauge
P901	All	S901-XX-N-6205	1/4" NPT	-

S901-XX-N-6205



Line Mounted

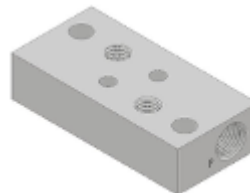
These range of manifolds mount directly to the pumps while providing fluid connections.

Pump Series	Ratio	Part Number	Port Sizes	
			Pressure/Return	Gauge
P901	6, 10, 20	S901-LP-N-6217	1/4" NPT	-
	40, 60, 80, 100	S901-HP-N-6218	1/4" NPT	-

S901-LP-N-6217



S901-HP-N-6218



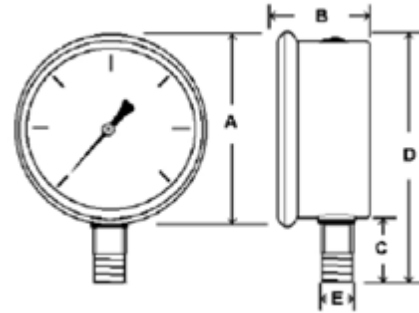
Hydraulic Gauges



Features:

Dial	2 1/2" (63 mm)
Case	Stainless Steel
Wetted Parts	Copper alloy
Bezel	Stainless Steel, Fixed
Lens	Polycarbonate
Pointer	Black Aluminum
Mount	Lower Mount
Accuracy	2-1-2% of span ASME B40.1 Grade A
Ambient Temp	-30° F to 180° F
Fill Fluid	Fillable = Glycerin, Low Temperature Glycerin, Silicone

Dimensional Data:



Dial	Unit	A	B	C	D	E
2 1/2"	in.	2.65"	1.2"	.88"	3.3"	1/4 NPT
	mm.	68	30	22	04	

Part Number	Pressure Range
A820-XX-N-GM	0 - 1,000 PSI
A820-XX-N-GN	0 - 1,500 PSI
A820-XX-N-GO	0 - 2,000 PSI
A820-XX-N-GP	0 - 3,000 PSI
A820-XX-N-GR	0 - 5,000 PSI
A820-XX-N-GS	0 - 6,000 PSI
A820-XX-N-GT	0 - 7,500 PSI
A820-XX-N-GU	0 - 10,000 PSI
A820-XX-N-GV	0 - 15,000 PSI

HYDRONIC WARRANTY POLICY: Hydronic, Corp. warrants each product against defects in material and workmanship for a period of 6 months from the date of manufacturing providing its use was in accordance with Hydronic recommendations. If the product fails to perform as warranted, Hydronic will, at its option, repair or replace the product free of charge. The company will not be liable for incidental or consequential damages. We make no other warranty, expressed or implied, including warranties of merchant ability or fitness for a particular purpose.

Reservoirs

All the reservoirs contain all components required to mount a pump to it.

Unit	Reservoir Size (G)	Catalog Call Out	Part Number	Description	Ratios	# of Pumps	Weight (lbs)
P720	1/3	R3	A720-XX-N-R3	1/3 g reservoir with filler breather and sight level gauge	All	1	5
	3/4	R4	A720-XX-N-R4	3/4 g reservoir with filler breather and sight level gauge	All	1	5
	1-1/2	R15	A720-XX-N-R15	1-1/2 g reservoir with filler breather and sight level gauge	All	1	8
	2-1/2	R25	A720-XX-N-R25	2-1/2 g reservoir with filler breather and sight level gauge	All	1	9
P801	1/3	R3	A720-XX-N-R3	1/3 g reservoir with filler breather, pump mounting bracket and sight level gauge	All	1	5
	3/4	R4	A720-XX-N-R4	3/4 g reservoir with filler breather, pump mounting bracket and sight level gauge	All	1	5
	1-1/2	R15	A801-XX-N-R15	1-1/2 g reservoir with filler breather, pump mounting bracket and sight level gauge	All	1	8
	2-1/2	R25	A801-XX-N-R25	2-1/2 g reservoir with filler breather, pump mounting bracket and sight level gauge	All	1	10
P820*	1/2	N/H	A820-XX-N-RNH	1/2 g reservoir with filler breather, sight level gauge, mounting bracket and vertical or horizontal mounting	All	1	4
	1	NL/HL	A820-XX-N-RNHL	1 g reservoir with filler breather, sight level gauge, mounting bracket and vertical or horizontal mounting	All	1	6
	2-1/2	R25	A820-XX-N-R25	2-1/2 g reservoir with filler breather, pump mounting bracket and sight level gauge	All	1	10
	3	R30	A820-XX-N-R30	3 g reservoir with filler breather, pump mounting bracket and sight level gauge	All	1	12
	5	R50	A820-XX-N-R50	5 g reservoir with filler breather, pump mounting bracket and sight level gauge	All	1	17
	5	R50	A820-XX/XX-N-R50	5 g reservoir with filler breather, 2 pump mounting brackets and sight level gauge	All	2	19
	8	R80	A820-XX-N-R80	8 g reservoir with filler breather, pump mounting bracket and sight level gauge	All	1	26
	8	R80	A820-XX/XX-N-R80	8 g reservoir with filler breather, 2 pump mounting brackets and sight level gauge	All	2	28
	10	R100	A820-XX-N-R100	10 g reservoir with filler breather, pump mounting bracket, return filter and sight level gauge	All	1	65
	10	R100	A820-XX/XX-N-R100	10 g reservoir with filler breather, 2 pump mounting brackets, return filter and sight level gauge	All	2	67
	20	R200	A820-XX-N-R200	20 g reservoir with filler breather, pump mounting bracket, return filter and sight level gauge	All	1	85
	20	R200	A820-XX/XX-N-R200	20 g reservoir with filler breather, 2 pump mounting brackets, return filter and sight level gauge	All	2	87

*P820 Reservoirs do not include manifold blocks.

Reservoirs

Unit	Reservoir Size (G)	Catalog Call Out	Part Number	Description	Ratios	# of Pumps	Weight (lbs)
P826	3/4	R4	A826-XX-N-R4	3/4 g reservoir with filler breather, pump mounting bracket and sight level gauge	All	1	5
	1-1/2	R15	A826-XX-N-R15	1-1/2 g reservoir with filler breather, pump mounting bracket and sight level gauge	All	1	5
	2-1/2	R25	A826-XX-N-R25	2-1/2 g reservoir with filler breather, pump mounting bracket and sight level gauge	All	1	11
P830	3/4	R4	A830-XX-N-R4	3/4 g reservoir with filler breather, pump mounting bracket and sight level gauge	All	1	5
	1-1/2	R15	A830-XX-N-R15	1-1/2 g reservoir with filler breather, pump mounting bracket and sight level gauge	All	1	5
	2-1/2	R25	A830-XX-N-R25	2-1/2 g reservoir with filler breather, pump mounting bracket and sight level gauge	All	1	11
	3	R15	A801-XX-N-R15	3 g reservoir with filler breather, pump mounting bracket and sight level gauge	All	1	13
	5	R25	A801-XX-N-R25	5 g reservoir with filler breather, pump mounting bracket, return filter and sight level gauge	All	1	18
	8	N/H	A820-XX-N-RNH	8 g reservoir with filler breather, pump mounting bracket, return filter and sight level gauge	All	1	27
P901	1/2	T050	A901A-HP-N-T050-PA	1/2 g reservoir with filler breather, sight level gauge and standard high pressure manifold prepared for APRV	40, 60, 80, 100	1	12
		T050	A901A-LP-N-T050-PA	1/2 g reservoir with filler breather, sight level gauge and standard low pressure manifold prepared for APRV	6, 10, 20	1	9
		T050	A901-HP-N-T050-DH	1/2 g reservoir with filler breather, sight level gauge and single station D03 high pressure manifold	40, 60, 80, 100	1	15
		T050	A901-HP-N-T050-P	1/2 g reservoir with filler breather, sight level gauge and standard high pressure manifold	40, 60, 80, 100	1	12
		T050	A901-LP-N-T050-DH	1/2 g reservoir with filler breather, sight level gauge and single station D03 low pressure manifold	6, 10, 20	1	10
		T050	A901-LP-N-T050-P	1/2 g reservoir with filler breather, sight level gauge and standard low pressure manifold	6, 10, 20	1	9
		T050	A901-XX-N-T050-HL	1/2 g reservoir with filler breather, sight level gauge and high/low manifold prepared for a high pressure and a low pressure pump	All	2	14
	1	T10	A901A-HP-N-T10-PA	1 g reservoir with filler breather, sight level gauge and standard high pressure manifold prepared for APRV	40, 60, 80, 100	1	14
		T10	A901A-LP-N-T10-PA	1 g reservoir with filler breather, sight level gauge and standard low pressure manifold prepared for APRV	6, 10, 20	1	11
		T10	A901-HP-N-T10-DH	1 g reservoir with filler breather, sight level gauge and single station D03 high pressure manifold	40, 60, 80, 100	1	17
		T10	A901-HP-N-T10-P	1 g reservoir with filler breather, sight level gauge and standard high pressure manifold	40, 60, 80, 100	1	14
		T10	A901-LP-N-T10-DH	1 g reservoir with filler breather, sight level gauge and single station D03 low pressure manifold	6, 10, 20	1	12
		T10	A901-LP-N-T10-P	1 g reservoir with filler breather, sight level gauge and standard low pressure manifold	6, 10, 20	1	11
		T10	A901-XX-N-T10-HL	1 g reservoir with filler breather, sight level gauge and high/low manifold prepared for a high pressure and a low pressure pump	All	2	16

Reservoirs

Unit	Reservoir Size (G)	Catalog Call Out	Part Number	Description	Ratios	# of Pumps	Weight (lbs)
P901	1-1/2	T15	A901A-HP-N-T15-PA	1-1/2 g reservoir with filler breather, sight level gauge and standard high pressure manifold prepared for APRV	40, 60, 80, 100	1	16
		T15	A901A-LP-N-T15-PA	1-1/2 g reservoir with filler breather, sight level gauge and standard low pressure manifold prepared for APRV	6, 10, 20	1	13
		T15	A901-HP-N-T15-DH	1-1/2 g reservoir with filler breather, sight level gauge and single station D03 high pressure manifold	40, 60, 80, 100	1	19
		T15	A901-HP-N-T15-P	1-1/2 g reservoir with filler breather, sight level gauge and standard high pressure manifold	40, 60, 80, 100	1	16
		T15	A901-LP-N-T15-DH	1-1/2 g reservoir with filler breather, sight level gauge and single station D03 low pressure manifold	6, 10, 20	1	14
		T15	A901-LP-N-T15-P	1-1/2 g reservoir with filler breather, sight level gauge and standard low pressure manifold	6, 10, 20	1	13
		T15	A901-XX-N-T15-HL	1-1/2 g reservoir with filler breather, sight level gauge and high/low manifold prepared for a high pressure and a low pressure	All	2	18



HYDRONIC WARRANTY POLICY: Hydronic, Corp. warrants each product against defects in material and workmanship for a period of 6 months from the date of manufacturing providing its use was in accordance with Hydronic recommendations. If the product fails to perform as warranted, Hydronic will, at its option, repair or replace the product free of charge. The company will not be liable for incidental or consequential damages. We make no other warranty, expressed or implied, including warranties of merchant ability or fitness for a particular purpose.



THE **MONNIER**
COMPANIES

MONNIER

FLAIRLINE



themonniercompanies.com



TMC22



HYDRONIC

Air-Driven Hydraulic Pumps & Power Packs

*P.O. Box 409
2034 Fruit Street
Algonac, MI 48001
Phone: 810.794.4935*

*hydroniccorp.com
themonniercompanies.com*